

## Product Highlights

### Total Compatibility

Works with any Wi-Fi certified device, providing solid performance and giving you peace of mind Sentence Case

### Increased Speed And Range

Wireless N 150 technology gives you increased speed and range over 802.11g/b

### Easy Configuration

Use the Quick Setup Wizard and Wi-Fi Protected Setup™ (WPS) for easy, automatic connection to a wireless network



## DWA-123

# Wireless N 150 USB Adapter

## Features

### Connectivity

- Easy Wireless connectivity for your notebook or desktop computer
- Compatible with IEEE 802.11n and 802.11g devices including game consoles and digital media players
- Access a secure wireless network using advanced WPA™ or WPA2™ encryption

### Secure

- Easy to install and use with the D-Link Setup Wizard and Wi-Fi Protected Setup (WPS)

Use the D-Link DWA-123 Wireless N 150 USB Adapter to connect your notebook or desktop computer to your wireless home network. Once connected, you can share a high-speed Internet connection and access shared documents, music, and photos from other computers on your network.

## High-Speed Secure Wireless Networking

Connect to a high-speed wireless network with the D-Link Wireless N 150 USB Adapter and enjoy surfing the web, checking e-mail, and chatting with family and friends online. The DWA-123 uses Wireless N 150 technology, which offers increased speed and range over the 802.11g/b standard<sup>1</sup> giving you a faster, more reliable wireless connection. Additionally, to protect your data and maintain your privacy, the Wireless N 150 USB Adapter supports WEP, WPA, and WPA2 encryption for connecting to a secure wireless network.

## Compatibility Assurance

The Wireless N 150 USB Adapter provides a high-speed connection to other Wireless N 150 or 802.11n devices and is backward compatible with 802.11g/b, ensuring compatibility with a wide range of wireless routers and networks.

## Easy To Install & Connect

D-Link's Quick Setup Wizard provides easy setup of your USB adapter so you can get connected quickly. Wi-Fi Protected Setup (WPS) sets up a secure wireless connection with the push of a button. WPS eliminates the need for complicated configuration, thus simplifying setup and saving time.

*[Handwritten signature]*

*[Handwritten signature]*

# DWA-123 Wireless N 150 USB Adapter

Prefeitura Municipal de Itapetininga  
 File No. 928  
 [Signature]

## Technical Specifications

### General

System Requirements	<ul style="list-style-type: none"> <li>Windows 8, 7, Vista, or Windows XP SP3</li> </ul>	<ul style="list-style-type: none"> <li>Available USB port</li> </ul>
Standards	<ul style="list-style-type: none"> <li>IEEE 802.11n</li> <li>IEEE 802.11g</li> </ul>	<ul style="list-style-type: none"> <li>IEEE 802.11b</li> <li>USB 2.0</li> </ul>
Frequency Range	<ul style="list-style-type: none"> <li>2.4 GHz to 2.4835 GHz</li> </ul>	
Antenna	<ul style="list-style-type: none"> <li>Printed</li> </ul>	
Security	<ul style="list-style-type: none"> <li>64/128-bit WEP data encryption</li> </ul>	<ul style="list-style-type: none"> <li>Wi-Fi Protected Access (WPA &amp; WPA2)</li> </ul>

### Physical and Environmental

Dimensions	<ul style="list-style-type: none"> <li>69.9 x 18.4 x 10.8 mm (2.75 x 0.72 x 0.43 inches)</li> </ul>	
Weight	<ul style="list-style-type: none"> <li>12 grams (0.02 lbs)</li> </ul>	
Temperature	<ul style="list-style-type: none"> <li>Operating: 0 to 40 °C (32 to 104 °F)</li> </ul>	<ul style="list-style-type: none"> <li>Storage: -20 to 65 °C (-4 to 149 °F)</li> </ul>
Humidity	<ul style="list-style-type: none"> <li>Operating: 10% to 90% non-condensing</li> </ul>	<ul style="list-style-type: none"> <li>Storage: 5% to 95% non-condensing</li> </ul>
Certifications	<ul style="list-style-type: none"> <li>CE</li> <li>FCC</li> <li>Compatible with Windows 8</li> </ul>	<ul style="list-style-type: none"> <li>Wi-Fi</li> <li>WPS Certified</li> </ul>

### Order Information

Part Number	Description
DWA-123	Wireless N 150 USB Adapter

\* Maximum wireless signal rate derived from IEEE standard 802.11n specifications. Actual data throughput will vary. Network conditions and environmental factors, including volume of network traffic, building materials and construction, and network overhead, lower actual data throughput rate. Environmental factors will adversely affect wireless signal range.

Updated 2013/05/22

Specifications are subject to change without notice. D-Link is a registered trademark of D-Link Corporation and its overseas subsidiaries. All other trademarks belong to their respective owners. ©2013 D-Link Corporation. All rights reserved. E&OE.

[Handwritten signature]

**D-Link®**  
 Building Networks for People



## Adaptador USB Wireless N150 DWA-123

Status do produto: Ativo

- Adaptador compatível com roteadores 11n (Wi-Fi 4)
- Retrocompatibilidade com roteadores 11g/b
- Velocidade de até 150 Mbps<sup>1</sup> em 2,4 GHz
- Adicione uma conexão Wi-Fi em seu computador

Google

## Adaptador USB Sem Fio D-Link DWA-123 N 150

Use o Adaptador USB Sem Fio D-Link DWA-123 N 150 para conectar seu notebook ou computador de mesa a sua rede doméstica sem fio. Uma vez conectado, você pode compartilhar uma conexão de Internet de alta velocidade e acessar documentos compartilhados, músicas e fotos de outros computadores em sua rede.

*[Handwritten signatures and marks]*



## Rede sem fio segura de alta velocidade

Conecte-se a uma rede sem fio de alta velocidade com o Adaptador USB Sem Fio N-150 da D-Link e divirta-se navegando na web, verificando e-mails e conversando com familiares e amigos on-line. O DWA-123 usa a tecnologia Wireless N 150, que oferece maior velocidade e alcance em relação ao padrão 802.11g / b, proporcionando uma conexão sem fio mais rápida e confiável. Além disso, para proteger seus dados e manter sua privacidade, o Adaptador USB Wireless N 150 suporta criptografia WEP, WPA e WPA2 para conexão a uma rede sem fio segura.



## Garantia de Compatibilidade

O Adaptador USB Sem Fio N 150 fornece uma conexão de alta velocidade a outros dispositivos Wireless N 150 ou 802.11n e é compatível com versões anteriores do 802.11g / b, garantindo compatibilidade com uma ampla gama de roteadores e redes sem fio.



## Fácil de Instalar e Conectar

O Assistente de Configuração Rápida da D-Link fornece uma configuração fácil do seu adaptador USB para que você possa se conectar rapidamente. O Wi-Fi Protected Setup (WPS) configura uma conexão sem fio segura com o acionamento de um botão. O WPS elimina a necessidade de configurações complicadas, simplificando a configuração e economizando tempo.



# Especificações Técnicas

## Suporte

- ➔ Manual do Produto
- ➔ Guia de Instalação Rápida
- 📄 Especificação Técnica
- 📄 Driver v4.05 (HW: D1)

Atenção: baixe a versão de firmware compatível com o H/W do seu aparelho. Esta informação está contida numa etiqueta abaixo do equipamento.



[Contato](#) [Quem Somos](#) [Casos de Sucesso](#) [D-Link Green](#) [Sala de Imprensa](#) [Newsletter](#) [Blog](#)



[Política de Privacidade](#)

© 2018 | Todos os direitos reservados a D-Link Brasil

*[Handwritten signatures and scribbles]*

*Almeida*

**Segurança**

- Criptografia de dados WEP de 64/128 bits
- Wi-Fi Protected Access (WPA & WPA2)

» **Funcionalidades**

**Padrões**

- IEEE 802.11n
- IEEE 802.11g
- IEEE 802.11b
- USB 2.0

**Requisitos do Sistema**

- Windows 8, 7, Vista, ou Windows XP SP3
- Porta USB disponível

» **Física**

**Dimensões**

- 69,9 x 18,4 x 10,8 mm (2,75 x 0,72 x 0,43 polegadas)

**Temperatura**

- Operação: 0 a 40°C (32 a 104°F)
- Armazenamento: -20 a 65°C (-4 a 149°F)

**Certificações**

- CE
- FCC
- Compatível com Windows 8
- Wi-Fi
- Certificação WPS

» **Informações**

**Garantia**

- 3 anos de garantia



**Peso**

- 12 gramas (0,02 lbs)

**Umidade**

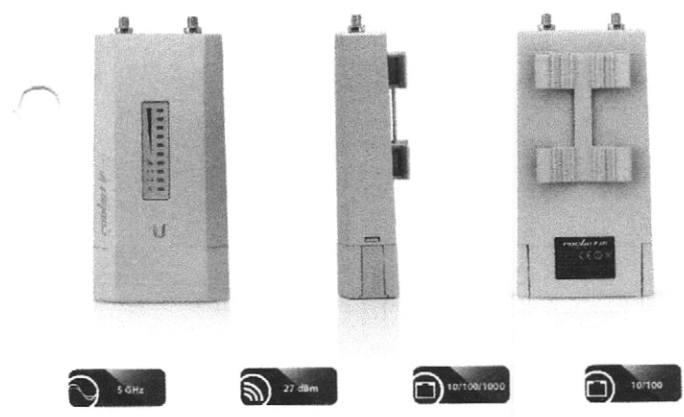
- Operação: 10% a 90% sem condensação
- Armazenamento: 5% a 95% sem condensação

Item 2  
 10709



RMS-TI Operating Frequency				Worldwide: 5170 - 5875 MHz USA: 5725 - 5850 MHz*			
Operating Frequency				Output Power			
TX Power Specifications				RX Power Specifications			
Modulation	Data Rate	Avg. TX	Tolerance	Modulation	Data Rate	Sensitivity	Tolerance
802.11a	6-24 Mbps	27 dBm	± 2 dB	802.11a	6-24 Mbps	-84 dBm Min.	± 2 dB
	36 Mbps	25 dBm	± 2 dB		36 Mbps	-80 dBm	± 2 dB
	48 Mbps	22 dBm	± 2 dB		48 Mbps	-77 dBm	± 2 dB
	54 Mbps	22 dBm	± 2 dB		54 Mbps	-75 dBm	± 2 dB
802.11n/airMAX	MCS0	27 dBm	± 2 dB	802.11n/airMAX	MCS0	-90 dBm	± 2 dB
	MCS1	27 dBm	± 2 dB		MCS1	-85 dBm	± 2 dB
	MCS2	27 dBm	± 2 dB		MCS2	-82 dBm	± 2 dB
	MCS3	27 dBm	± 2 dB		MCS3	-80 dBm	± 2 dB
	MCS4	26 dBm	± 2 dB		MCS4	-80 dBm	± 2 dB
	MCS5	24 dBm	± 2 dB		MCS5	-83 dBm	± 2 dB
	MCS6	27 dBm	± 2 dB		MCS6	-77 dBm	± 2 dB
	MCS7	21 dBm	± 2 dB		MCS7	-74 dBm	± 2 dB
	MCS8	27 dBm	± 2 dB		MCS8	-92 dBm	± 2 dB
	MCS9	27 dBm	± 2 dB		MCS9	-92 dBm	± 2 dB
	MCS10	27 dBm	± 2 dB		MCS10	-90 dBm	± 2 dB
	MCS11	27 dBm	± 2 dB		MCS11	-87 dBm	± 2 dB
	MCS12	26 dBm	± 2 dB		MCS12	-84 dBm	± 2 dB
	MCS13	24 dBm	± 2 dB		MCS13	-79 dBm	± 2 dB
	MCS14	22 dBm	± 2 dB		MCS14	-78 dBm	± 2 dB
MCS15	21 dBm	± 2 dB	MCS15	-75 dBm	± 2 dB		

DATASHEET  
**rocket M**  
 9



Handwritten signatures and marks at the bottom right of the page.

# Specifications



rocket M DATASHEET

RMS-Ti Physical / Electrical / Environmental Information	
Dimensions	160 x 80 x 44 mm (6.30 x 3.15 x 1.73")
Weight	350 g (12.35 oz)
Enclosure Characteristics	Die Cast Aluminum
Processor	MIPS 74Kc
Memory	128 MB SDRAM, 8 MB Flash
Networking Interface	(1) 10/100/1000 Mbps (1) 10/100 Mbps
RF Connections	(2) RP-SMA (Waterproof), 1 SMA (GPS)
LFDs	Power, (2) Ethernet, (6) Signal Strength, GPS
Max. Power Consumption	8W
Power Supply	48V, 0.5A PoE Adapter
Power Method	Passive PoE (Pairs 4, 5+, 7, 8 Return) 802.3af Compliant
ESD/EMP Protection	± 30KV Air / Contact
Operating Temperature	-30 to 75° C (-22 to 167° F)
Operating Humidity	5 to 95% Noncondensing
Shock and Vibration	ETSI300-019-1.4

RMS-Ti Software Information	
Modes	Access Point, Station
Services	Web Server, SNMP, SSH Server, Telnet, Ping, Watchdog, DHCP, NAT, Bridging, Routing
Utilities	Antenna Alignment Tool, Discovery Utility, Site Survey, Ping, Traceroute, Speed Test
Distance Adjustment	Dynamic Ack and Ackless Mode
Power Adjustment	Software Adjustable UI or CLI
Security	WPA2 AES Only
QoS	Supports Packet Level Classification WMM and User Customer Level: High/Medium/Low
Statistical Reporting	Up Time, Packet Errors, Data Rates, Wireless Distance, Ethernet Link Rate
Other	Remote Reset Support, Software Enabled/Disabled, VLAN Support, 64QAM, 5/8/10/20/30/40 MHz Channel Width Support
Ubiquiti Specific Features	airMAX Mode, Traffic Shaping with Burst Support, Discovery Protocol, Frequency Band Offset, Ackless Mode

RMS-Ti Compliance	
Wireless Approvals	FCC, IC, CE
RoHS Compliance	Yes






M5 Operating Frequency							
Operating Frequency				Worldwide: 5170 - 5875 MHz USA: 5725 - 5850 MHz*			
Output Power				27 dBm			
Modulation	TX Power Specifications			Modulation	RX Power Specifications		
	Data Rate	Avg. TX	Tolerance		Data Rate	Sensitivity	Tolerance
802.11a	6-24 Mbps	27 dBm	± 2 dB	802.11a	6-24 Mbps	-94 dBm Min	± 2 dB
	36 Mbps	25 dBm	± 2 dB		36 Mbps	-80 dBm	± 2 dB
	48 Mbps	23 dBm	± 2 dB		48 Mbps	-77 dBm	± 2 dB
	54 Mbps	22 dBm	± 2 dB		54 Mbps	-75 dBm	± 2 dB
	MCS0	27 dBm	± 2 dB		MCS0	-90 dBm	± 2 dB
802.11n/11nMAX	MCS1	27 dBm	± 2 dB	802.11n/11nMAX	MCS1	-85 dBm	± 2 dB
	MCS2	27 dBm	± 2 dB		MCS2	-82 dBm	± 2 dB
	MCS3	27 dBm	± 2 dB		MCS3	-80 dBm	± 2 dB
	MCS4	26 dBm	± 2 dB		MCS4	-86 dBm	± 2 dB
	MCS5	24 dBm	± 2 dB		MCS5	-83 dBm	± 2 dB
	MCS6	27 dBm	± 2 dB		MCS6	-77 dBm	± 2 dB
	MCS7	21 dBm	± 2 dB		MCS7	-74 dBm	± 2 dB
	MCS8	27 dBm	± 2 dB		MCS8	-95 dBm	± 2 dB
	MCS9	27 dBm	± 2 dB		MCS9	-93 dBm	± 2 dB
	MCS10	27 dBm	± 2 dB		MCS10	-90 dBm	± 2 dB
	MCS11	27 dBm	± 2 dB		MCS11	-87 dBm	± 2 dB
	MCS12	26 dBm	± 2 dB		MCS12	-84 dBm	± 2 dB
	MCS13	24 dBm	± 2 dB		MCS13	-79 dBm	± 2 dB
	MCS14	22 dBm	± 2 dB		MCS14	-76 dBm	± 2 dB
	MCS15	21 dBm	± 2 dB		MCS15	-75 dBm	± 2 dB

\* US Under FCC Part 15.107A-15.109 and 15.109-15.109.1B-2

DATASHEET  
**rocket M**



*[Handwritten signatures and marks]*

# Specifications

## rocket M5

### M5 Physical / Electrical / Environmental Information

Dimensions	160 x 80 x 30 mm (6.30 x 3.15 x 1.18")
Weight	500 g (1.1 lb)
Enclosure Characteristics	Outdoor UV Stabilized Plastic
Processor	MIPS 74Kc
Memory	128 MB SDRAM, 8 MB Flash
Networking Interface	(1) 10/100 Mbps
RF Connections	(2) RP-SMA (Waterproof)
LEDs	Power, Ethernet, (4) Signal Strength
Max. Power Consumption	5W
Power Supply	24V, 1A PoE Adapter
Power Method	Passive PoE (Pairs 4, 5+, 7, 8 Return)
ESD/EMP Protection	± 24KV Air / Contact
Operating Temperature	-30 to 75° C (-22 to 167° F)
Operating Humidity	5 to 95% Noncondensing
Shock and Vibration	ETSI300-019-1.4

### M5 Software Information

Modes	Access Point, Station
Services	Web Server, SNMP, SSH Server, Telnet, Ping, Watchdog, DHCP, NAT, Bridging, Routing
Utilities	Antenna Alignment Tool, Discovery Utility, Site Survey, Ping, Traceroute, Speed Test
Distance Adjustment	Dynamic Ack and Ackless Mode
Power Adjustment	Software Adjustable UI or CLI
Security	WPA2 AES Only
QoS	Supports Packet Level Classification WMM and User Customer Level: High/Medium/Low
Statistical Reporting	Up Time, Packet Errors, Data Rates, Wireless Distance, Ethernet Link Rate
Other	Remote Reset Support, Software Enabled/Disabled, VLAN Support, 64QAM, 5/8, 10, 20/30/40 MHz Channel Width Support
Ubiquiti Specific Features	airMAX Mode, Traffic Shaping with Burst Support, Discovery Protocol, Frequency Band Offset, Ackless Mode

### M5 Compliance

Wireless Approvals	FCC, IC, CE
RoHS Compliance	Yes



*[Handwritten signature]*

*[Handwritten signature]*

*[Handwritten signature]*

*[Handwritten signature]*

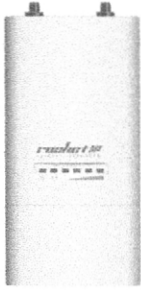
*[Handwritten signature]*

## 2.4 GHz Models

The 2.4 GHz frequency band is free to use, worldwide; however, it is extremely crowded due to interference from other wireless devices. Also, there are only three non-overlapping, 20 MHz channels available for use.

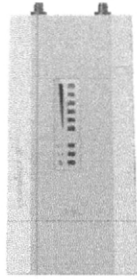
### M2

The Rocket enclosure is built to survive harsh environments and fits the Rocket mount built into every airMAX antenna. Pair the Rocket with the appropriate antenna for your PTP link or PMP network.



### RM2-Ti

Its Gigabit Ethernet connection delivers high throughput, and its aircraft-grade aluminum casing improves performance in harsh RF environments and extreme weather conditions.



## 900 MHz Model

The 900 MHz frequency band has a higher tolerance for obstacles that may obstruct line of sight; however noise levels are typically higher. Also its use may require a license in some parts of the world.

### M900

The Rocket enclosure is built to survive harsh environments and fits the Rocket mount built into every airMAX antenna. Pair the Rocket with the appropriate antenna for your PTP link or PMP network.



DATASHEET

rocket M



Handwritten signatures and initials scattered on the right side of the page, including a large 'X' mark and the name 'Olivera'.

### 5 GHz Models

The 5 GHz frequency band is free to use, worldwide, offers plentiful spectrum, and works well for long-distance links. However, 5 GHz signals have more difficulty passing through obstacles than lower-frequency signals.

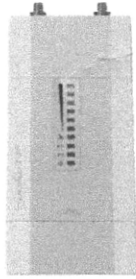
#### M5

The Rocket enclosure is built to survive harsh environments and fits the Rocket mount built into every airMAX antenna. Pair the Rocket with the appropriate antenna for your PtP link or PtMP network.



#### RM5-Ti

Its Gigabit Ethernet connection delivers high throughput, and its aircraft-grade aluminum casing improves performance in harsh RF environments and extreme weather conditions.



### 3/3.65 GHz Models

The 3 or 3.65 GHz frequency band is noise-free in most areas; however, its use requires a license. There may be additional restrictions on its use depending on local country regulations.

#### M3

The Rocket enclosure is built to survive harsh environments and fits the Rocket mount built into every airMAX antenna. Pair the Rocket with the appropriate antenna for your PtP link or PtMP network.



#### M365

The Rocket enclosure is built to survive harsh environments and fits the Rocket mount built into every airMAX antenna. Pair the Rocket with the appropriate antenna for your PtP link or PtMP network.

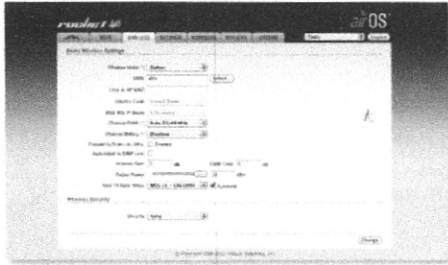


# Software

## airOS

Built upon an intuitive user interface foundation, airOS 5 is an advanced operating system for Ubiquiti airMAX M Series products.

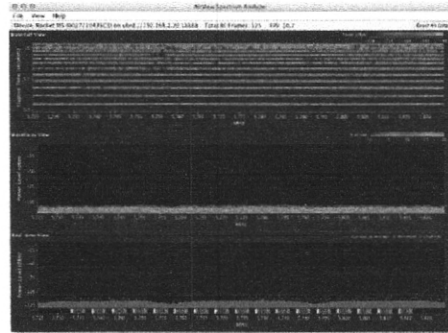
- airMAX Protocol Support
- Long-Range PtP Link Mode
- Transmit Power Control: Automatic/Manual
- Automatic Distance Selection (ACK Timing)
- Device Statistics
- Diagnostic Tools



## airView

Integrated on all Ubiquiti M products, airView provides advanced spectrum analyzer functionality: waterfall, waveform, and real-time spectral views allow operators to identify noise signatures and plan their networks to minimize noise interference.

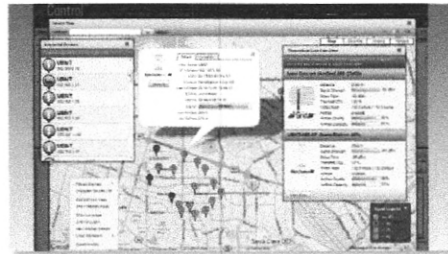
- **Waterfall** Aggregate energy over time for each frequency.
- **Waveform** Aggregate energy collected.
- **Real-time** Energy is shown in real time as a function of frequency.
- **Recording** Automate airView to record and report results.



## airControl

airControl is a powerful and intuitive, web-based server network management application, which allows operators to centrally manage entire networks of Ubiquiti devices.

- Network Map
- Monitor Device Status
- Mass Firmware Upgrade
- Web UI Access
- Manage Groups of Devices
- Task Scheduling



rocket III DATASHEET



*[Handwritten signatures and scribbles]*

## Overview

Featuring mix-and-match industrial design, the Rocket™ is a Ubiquiti Networks® airMAX® BaseStation that supports speeds of up to 130+ Mbps real TCP/IP throughput. It is ideal for deployment in Point-to-Point (PtP) bridging or Point-to-MultiPoint (PtMP) airMAX applications.

### Flexibility

The Rocket is available in several frequency models: 900 MHz, 2.4 GHz, 3/3.65 GHz, and 5 GHz, to support your specific application. You have the freedom to locate, deploy, and operate the Rocket in these unlicensed bands (subject to local country regulations).

The Rocket allows for a high degree of flexibility in configuring channel bandwidths: 2, 3, 5, 8, 10, 20, 25, 30, and/or 40 MHz, depending on the specific product model and local country regulations.

### Plug and Play Integration

Rocket radios and airMAX antennas have been designed to seamlessly work together. Every airMAX Sector, RocketDish™, Omni, or Yagi antenna has a built-in Rocket mount, so installation requires no special tools. Snap the Rocket securely into place and mount the antenna; then you have the optimal combination of Rocket radio and airMAX antenna for your PtP or PtMP application.

### airMAX Technology Included

Unlike standard Wi-Fi protocol, Ubiquiti's Time Division Multiple Access (TDMA) airMAX protocol allows each client to send and receive data using pre-designated time slots scheduled by an intelligent AP controller.

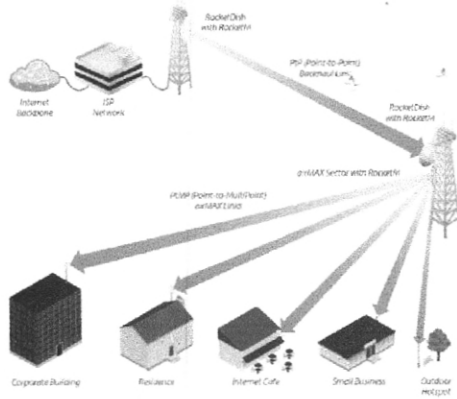
This time slot method eliminates hidden node collisions and maximizes airtime efficiency. It provides many magnitudes of performance improvements in latency, throughput, and scalability compared to all other outdoor systems in its class.

**Intelligent QoS** Priority is given to voice/video for seamless streaming.

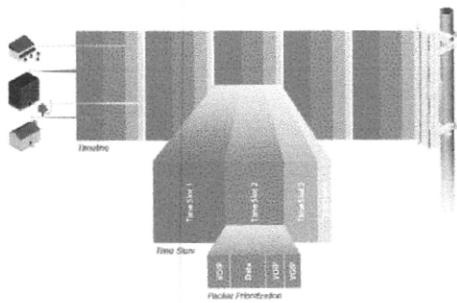
**Scalability** High capacity and scalability.

**Long Distance** Capable of high-speed, carrier-class links.

## Application Example



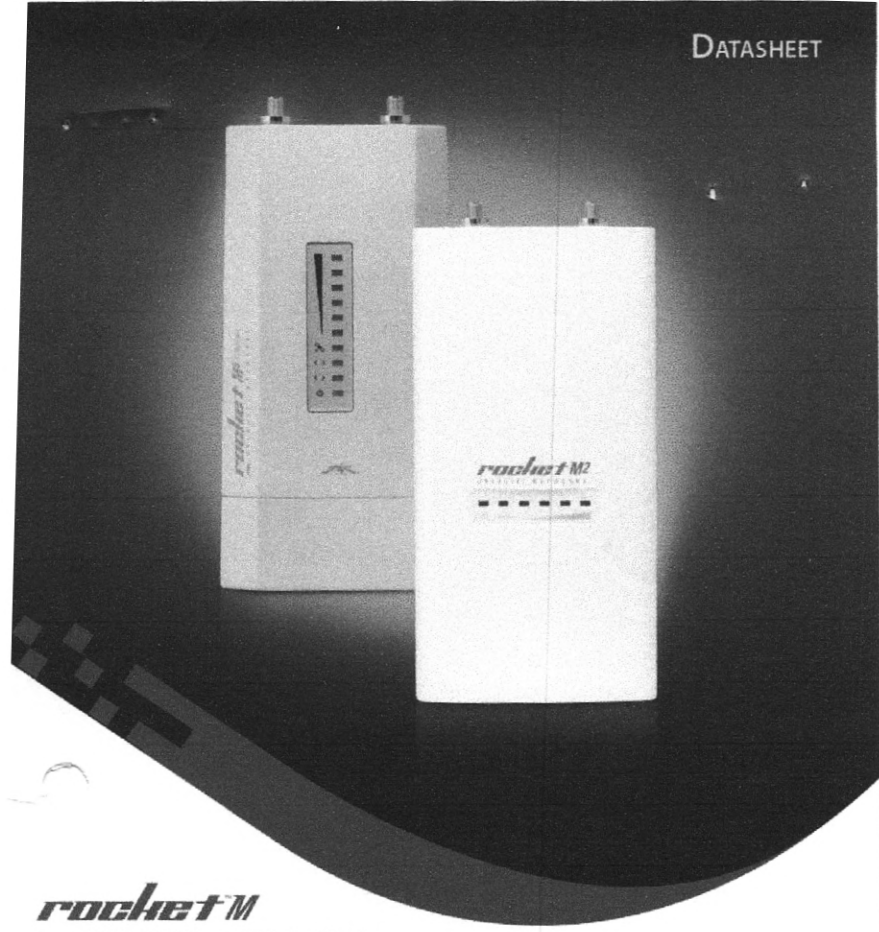
## airMAX TDMA Technology



Up to 100 airMAX stations can be connected to an airMAX Sector; four airMAX stations are shown to illustrate the general concept.



Handwritten signatures and initials at the bottom right of the page.



# rocket™

Powerful 2x2 MIMO airMAX® BaseStation

Models: M5, RM5-Ti, M3, M365, M2, RM2-Ti, M900

Advanced Software Technology to Maximize Performance

Plug and Play Integration with airMAX Antennas

Frequency and Channel Flexibility



*[Handwritten mark]*

*[Handwritten mark]*

*[Handwritten mark]*

*[Handwritten mark]*

*[Handwritten signature]*

*[Handwritten signature]*

## Product Highlights

### Great Speed and Coverage

Share your Internet connection with your wired and wireless devices with fast wireless speeds and range to reach more places throughout your home

### Flexible and Versatile

Functions both as a conventional router or a wireless repeater to extend an existing network

### Easy to Set Up

Get up and running in no time with a web-based setup wizard that walks you through the configuration process

## DIR-615 Wireless N 300 Router

### Features

#### Connectivity

- 10/100 Internet port to connect to broadband Internet with high transfer speeds
- Four 10/100 LAN ports to connect wired devices for high-speed online activities
- Wireless N technology for increased speed and range, plus Repeater Mode to extend the reach of your existing wireless network

#### Security Features

- NAT Firewall helps block unwanted connections
- Wi-Fi Protected Setup (WPS) to quickly add devices to your network
- WPA/WPA2 encryption to help prevent unauthorized access and snooping on your wireless network

#### Ease of Use

- Web browser-based setup and configuration
- Setup wizard to guide you through the configuration process



The DIR-615 Wireless N 300 Router is an attractive, high-performance router that makes it easy to share your broadband Internet connection with all your devices. Simply connect it to your broadband modem, then use the web-based Setup wizard to guide you step-by-step through the configuration process. Whether you're surfing the web on your desktop or relaxing on the couch with your laptop, the DIR-615 keeps you connected wherever you are in your home.

### A Fast and Reliable Home Network

The DIR-615 creates a high-speed home network with wireless speeds of up to 300 Mbps<sup>1</sup> for fast file transfers, seamless web surfing, and smooth online gaming. The external antennas increase your wireless network's coverage so you can avoid "dead spots" and get a reliable connection in more places throughout your home. The DIR-615 also has Repeater Mode, which allows you to extend the range of your existing wireless network, allowing you to reach the farthest corners of your home or small office.

### Flexible Connectivity for Your Devices

The DIR-615 keeps you connected, no matter whether you're using a desktop or laptop PC, a smartphone, or a tablet. Four 10/100 Fast Ethernet ports provide fast and reliable connectivity for your wired devices, while Wireless N 300 lets you connect all your wireless devices throughout your home. Get some work done on your desktop, play online with your game console, or check out online videos on your smartphone - the Wireless N 300 Router lets you access the Internet with all your devices.

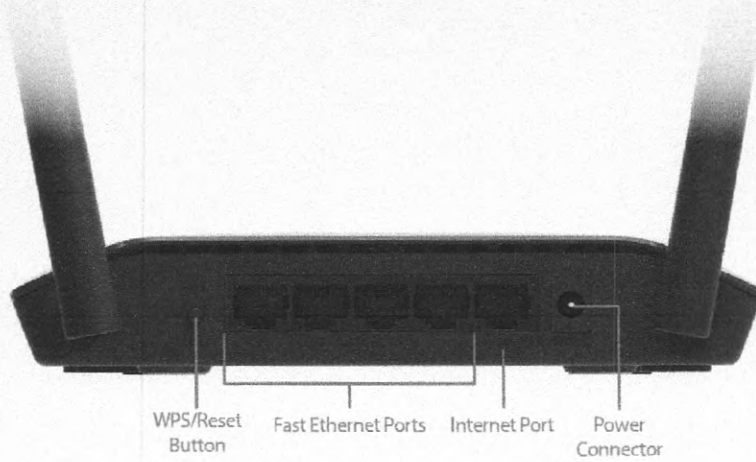
### Easy to Set Up

Sharing your Internet connection doesn't have to be a complicated process - just open a web browser to access the Setup wizard and follow the easy step-by-step instructions to get started. Create an encrypted network in seconds using WPS, which instantly creates a connection to a new device without the need to enter settings or create passwords.

*[Handwritten signatures and initials]*



**Rear View**



Prefeitura Municipal de Itaguara  
Fts. 043  
*[Signature]*

Technical Specifications		
<b>General</b>		
Device Interfaces	<ul style="list-style-type: none"> <li>• Wireless N 300</li> <li>• Four 10/100 LAN ports</li> </ul>	<ul style="list-style-type: none"> <li>• 10/100 WAN (Internet) port</li> </ul>
Antenna	<ul style="list-style-type: none"> <li>• 5dBi External Antenna</li> </ul>	
Standards	<ul style="list-style-type: none"> <li>• IEEE 802.11n/g/b</li> <li>• IEEE 802.3</li> </ul>	<ul style="list-style-type: none"> <li>• IEEE 802.3u</li> <li>• IEEE 802.3x</li> </ul>
LEDs	<ul style="list-style-type: none"> <li>• Power LED</li> <li>• WLAN LED</li> </ul>	<ul style="list-style-type: none"> <li>• Internet LED</li> </ul>
Minimum System Requirements	<ul style="list-style-type: none"> <li>• Windows, Macintosh, or Linux-based operating system</li> <li>• Microsoft Internet Explorer 10 or higher, Firefox 28 or higher, or Chrome 28 or higher</li> </ul>	<ul style="list-style-type: none"> <li>• Network Interface Card</li> <li>• Cable or DSL Modem</li> <li>• Subscription with an Internet Service Provider</li> </ul>
<b>Functionality</b>		
Wireless Encryption	<ul style="list-style-type: none"> <li>• WPA &amp; WPA2 (Wi-Fi Protected Access)</li> </ul>	<ul style="list-style-type: none"> <li>• Wi-Fi Protected Setup (WPS)</li> </ul>
Advanced Features	<ul style="list-style-type: none"> <li>• Web Setup wizard</li> <li>• UPnP support</li> </ul>	<ul style="list-style-type: none"> <li>• Active Firewall - Network Address Translation (NAT)</li> <li>• Repeater Mode</li> </ul>
<b>Physical</b>		
Dimensions (L x W x H)	<ul style="list-style-type: none"> <li>• 173.76 x 128.25 x 32.86 mm (6.89 x 5.9 x 1.22 in)</li> </ul>	
Weight	<ul style="list-style-type: none"> <li>• 215 g (7.58 ounces)</li> </ul>	
Power	<ul style="list-style-type: none"> <li>• Input: 100 to 240 V AC, 50/60 Hz</li> </ul>	<ul style="list-style-type: none"> <li>• Output: 12V 0.5 A</li> </ul>
Temperature	<ul style="list-style-type: none"> <li>• Operating: 0 to 40 °C (32 to 104 °F)</li> </ul>	<ul style="list-style-type: none"> <li>• Storage: -20 to 65 °C (-4 to 149 °F)</li> </ul>
Humidity	<ul style="list-style-type: none"> <li>• Operating: 10% to 90% non-condensing</li> </ul>	<ul style="list-style-type: none"> <li>• Storage: 5% to 95% non-condensing</li> </ul>
Certifications	<ul style="list-style-type: none"> <li>• CE</li> <li>• FCC</li> </ul>	<ul style="list-style-type: none"> <li>• Wi-Fi Certified</li> </ul>

# DIR-615 Wireless N 300 Router



## Order Information

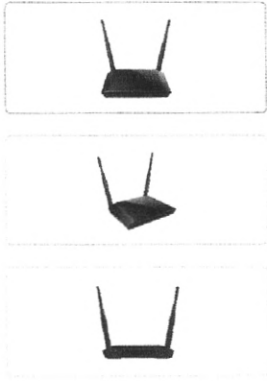
Part Number	Description
DIR-615	Wireless N 300 Router

<sup>1</sup> Maximum wireless signal rate derived from IEEE Standard 802.11n, 802.11g, and 802.11b specifications. Actual data throughput will vary. Network conditions and environmental factors, including volume of network traffic, building materials and construction, and network overhead, lower actual data throughput rate. Environmental factors will adversely affect wireless signal range. Wireless range and speed rates are D-Link relative performance measurements based on the wireless range and speed rates of a standard Wireless G product from D-Link. Maximum throughput based on D-Link 802.11n devices.

Updated 08/23/2017

Specifications are subject to change without notice. D-Link is a registered trademark of D-Link Corporation and its overseas subsidiaries. All other trademarks belong to their respective owners.  
©2017 D-Link Corporation. All rights reserved. E&OE.

**D-Link**<sup>®</sup>  
Building Networks for People



# Roteador Wireless N300 DIR-615

Status do produto: Ativo

- Firmware personalizada para provedores
- Suporte para IPv6
- Modo Repetidor Wireless

COMPRAR

## ROTEADOR WIRELESS N 300Mbps

Rede sem fios de alta velocidade para compartilhar a Internet com sua família, ouvir músicas e acessar redes sociais.



*Handwritten signatures and scribbles:*

*Almeida*

*Almeida*



# Tecnologias de Destaque



## Wi-Fi

300Mbps de velocidade disponível para navegar à vontade nas redes sociais.



## Modo Repetidor

Disponível para que amplie o alcance wireless de sua rede existente sem o uso de cabos.

2x5mm

## Antenas

Antenas que auxiliam na melhor distribuição de sinal Wi-Fi.



## Portas

Portas de rede disponíveis para conexão de Smart TVs, videogames, e outros dispositivos cabeados.



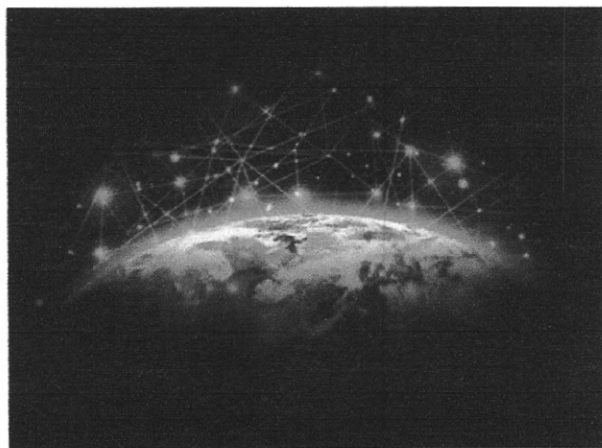
## Cobertura

Indicado para atender ambientes com até 100m² com ótima qualidade de sinal Wi-Fi.



## IPv6

Roteador Wi-Fi pronto para as novas conexões de Internet no Brasil.



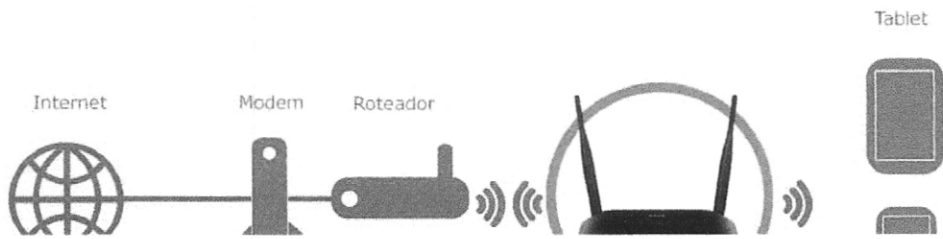
## IPv6

Proteja seu investimento e adquira o roteador pronto para o futuro das novas conexões de Internet. DIR-615 é 100% funcional e homologado pelos principais provedores que já fornecem conexões IPv6.

Handwritten signatures and initials on the right side of the page.

## Modo Repetidor Wireless

Amplie o sinal Wi-Fi do roteador de sua operadora.



## Redes Sociais

DIR-615 é a solução ideal para acessar a Internet, baixar e-mails e acessar redes sociais através de Tablets e Smartphones.

## O que contém a embalagem



Roteador N300 (DIR-615)



Fonte de Alimentação



Cartão de Configurações Wi-Fi



Guia Rápido de Instalação

*[Handwritten signatures and marks]*



Smartphone



## Filtro de sites e controle de pais

Controle o que seus filhos veem na Internet

## Especificações Técnicas

» Geral

### Interfaces do dispositivo

- 4 x LAN 10/100Mbps
- 1 x WAN 10/100Mbps
- Wireless N
- Botão WPS/Reset

### Padrões Wi-Fi

- 802.11n
- 802.11g
- 802.11b

*[Handwritten mark]*

## Suporte

Video(s)



Como configurar qualquer Roteador EXO

*[Handwritten scribble]*

## Suporte

- ➔ Manual do Produto
- ➔ Guia de Instalação Rápida
- ➔ Manual - Atualização de Firmware
- ➔ Manual - Internet Modo PPPoE
- ➔ Manual - Configuração do WiFi

*[Handwritten signature]*

*[Handwritten signature]*

## Product Highlights

### The Latest Wireless AC Technology

Enjoy combined wireless speeds of up to 750 Mbps and increased range thanks to the latest 802.11ac wireless technology

### High-Performance Dual Band Wireless

Connect to your network via two concurrent wireless bands for seamless performance no matter what you are doing

### Simple and Secure Setup

Set up the DIR-819 in no time with the web-based setup wizard, and create secure wireless connections easily using Wi-Fi Protected Setup (WPS)



## DIR-819

# Wireless AC750 Dual Band Router

## Features

### High-Speed Connectivity

- Uses the latest Wireless AC technology to deliver blazingly fast wireless connectivity with increased range and reliability<sup>1</sup>
- 10/100 Fast Ethernet WAN port for speedy Internet access
- Four 10/100 Fast Ethernet LAN ports give you high-speed wired connectivity

### Flexible Bandwidth

- Concurrent dual band wireless for connections up to 750 Mbps<sup>1</sup>
- QoS engine for prioritizing important traffic and delivering uninterrupted bandwidth

### Setup and Management

- Web browser-based setup and configuration
- Intuitive setup wizard to guide you through the configuration process
- Firewall and access control options to prevent attacks and restrict access to your network

The DIR-819 Wireless AC750 Dual Band Router is an affordable yet powerful wireless networking solution which combines the latest high-speed 802.11ac Wi-Fi specification with dual band technology and Fast Ethernet ports to deliver a seamless networking experience. The increased range and reliability of wireless AC technology reaches farther into your home, and advanced security features keep your network and data safe from intruders.

## Dual Band Wireless AC for Seamless Performance

The DIR-819 Wireless AC750 Dual Band Router gives you lightning-fast Wi-Fi speeds of up to 750 Mbps and increased range. It also uses dual band wireless, allowing you to operate two concurrent, high-speed Wi-Fi bands for ultimate wireless performance. Surf the web, chat, and play online games on the 2.4 GHz band, while simultaneously streaming digital media on the 5 GHz band. What's more, each band can operate as a separate Wi-Fi network, giving you the ability to customize your network according to your connectivity needs. You can even configure a guest zone to give visitors Internet access without giving them access to the rest of your network.

## High-Speed Wired and Wireless Connectivity

The DIR-819 Wireless AC750 Dual Band Router uses the latest high-speed wireless technology to bring you lightning-fast Wi-Fi speeds of up to 750 Mbps and increased range. Enjoy streaming media, Internet phone calls, online gaming, and content-rich web surfing throughout your home. In addition, four 10/100 Fast Ethernet ports give you solid, dependable wired performance for devices such as media centers and gaming consoles. The built-in Quality of Service (QoS) engine allows you to prioritize important traffic to ensure that your favorite applications are receiving optimal bandwidth.

Handwritten signatures and scribbles at the bottom right of the page.

# DIR-819 Wireless AC750 Dual Band Router



Certifications	<ul style="list-style-type: none"><li>• FCC</li><li>• IC</li><li>• UL</li></ul>	<ul style="list-style-type: none"><li>• Wi-Fi</li><li>• WPS</li></ul>
<b>Order Information</b>		
Part Number	Description	
DIR-819	Wireless AC750 Dual Band Router	

\* Maximum wireless signal rate derived from IEEE 802.11ac and IEEE 802.11n specifications. Actual data throughput will vary. Network conditions and environmental factors, including volume of network traffic, building materials and construction, and network overhead, lower actual data throughput rate. Environmental factors will adversely affect wireless signal range. Wireless range and speed rates are D-Link relative performance measurements based on the wireless range and speed rates of a standard wireless product from D-Link. Maximum throughput based on D-Link 802.11ac devices.

Updated 03/22/2019

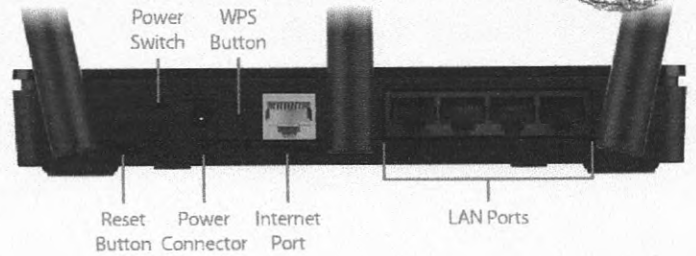


prefeitura Municipal de Itaculândia  
Fis. 952

**Easy to Set Up, Easy to Secure**

Sharing your Internet connection doesn't have to be a complicated process; just open a web browser to access the setup wizard and follow the easy step-by-step instructions to get started. Implement WPA/WPA2 wireless security in minutes with the wireless network setup wizard, or use Wi-Fi Protected Setup (WPS), which establishes a secure connection to new devices without the need to enter settings or create passwords. In addition, the built-in firewall protects against malicious attacks from the Internet, and access control features allow you to restrict access to your network.

**Back View**



**Technical Specifications**

**General**

Device Interfaces	<ul style="list-style-type: none"> <li>• IEEE 802.11ac/n/g/b/a wireless LAN<sup>1</sup></li> <li>• 10/100 Fast Ethernet WAN port</li> </ul>	<ul style="list-style-type: none"> <li>• Four 10/100 Fast Ethernet LAN ports</li> </ul>
LEDs	<ul style="list-style-type: none"> <li>• Power</li> <li>• 5 GHz WLAN</li> <li>• 2.4 GHz WLAN</li> </ul>	<ul style="list-style-type: none"> <li>• Internet</li> <li>• WPS</li> </ul>
Antenna Type	<ul style="list-style-type: none"> <li>• Three external antennas</li> </ul>	
Data Signal Rate	<ul style="list-style-type: none"> <li>• 2.4 GHz</li> <li>• Up to 300 Mbps<sup>1</sup></li> </ul>	<ul style="list-style-type: none"> <li>• 5 GHz</li> <li>• Up to 433 Mbps<sup>1</sup></li> </ul>
Standards	<ul style="list-style-type: none"> <li>• IEEE 802.11ac</li> <li>• IEEE 802.11n</li> <li>• IEEE 802.11g</li> </ul>	<ul style="list-style-type: none"> <li>• IEEE 802.11b</li> <li>• IEEE 802.11a</li> <li>• IEEE 802.3u</li> </ul>
Minimum Requirements	<ul style="list-style-type: none"> <li>• Windows 10/8.1/8/7/Vista/XP SP3 or MAC OS X 10.6 or higher</li> <li>• Internet Explorer 9, Firefox 20, Chrome 25, Safari 5.1 or higher</li> </ul>	<ul style="list-style-type: none"> <li>• Wired or Wireless Ethernet network adapter</li> <li>• Cable/DSL modem or other Internet Service Provider equipment with Ethernet port and an active Internet subscription</li> </ul>

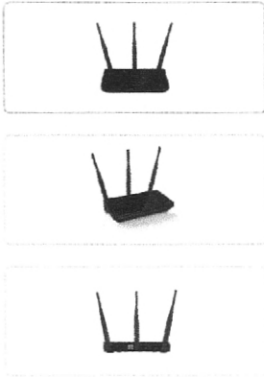
**Functionality**

Security	<ul style="list-style-type: none"> <li>• WPA &amp; WPA2 (Wi-Fi Protected Access)</li> </ul>	<ul style="list-style-type: none"> <li>• WPS (Wi-Fi Protected Setup)</li> </ul>
Advanced Features	<ul style="list-style-type: none"> <li>• Web setup wizard</li> <li>• QoS (Quality of Service)</li> <li>• DMZ (Demilitarized Zone)</li> <li>• Repeater mode</li> </ul>	<ul style="list-style-type: none"> <li>• Firewall - Network Address Translation (NAT)</li> <li>• Guest zone</li> <li>• IPv6 functionality</li> </ul>

**Physical**

Dimensions	<ul style="list-style-type: none"> <li>• 192 x 108 x 30 mm (7.56 x 4.25 x 1.8 inches)</li> </ul>	
Weight	<ul style="list-style-type: none"> <li>• 240 grams (8.5 ounces)</li> </ul>	
Power	<ul style="list-style-type: none"> <li>• Input: 100 to 240 V AC, 50/60 Hz</li> </ul>	<ul style="list-style-type: none"> <li>• Output: 12 V DC, 0.5 A</li> </ul>
Temperature	<ul style="list-style-type: none"> <li>• Operating: 0 to 40 °C (32 to 104 °F)</li> </ul>	<ul style="list-style-type: none"> <li>• Storage: -20 to 65 °C (-4 to 149 °F)</li> </ul>
Humidity	<ul style="list-style-type: none"> <li>• Operating: 10% to 90% non-condensing</li> </ul>	<ul style="list-style-type: none"> <li>• Storage: 5% to 95% non-condensing</li> </ul>

*[Handwritten signatures and marks]*



## DIR-819 Roteador Wireless AC750

DIR-819

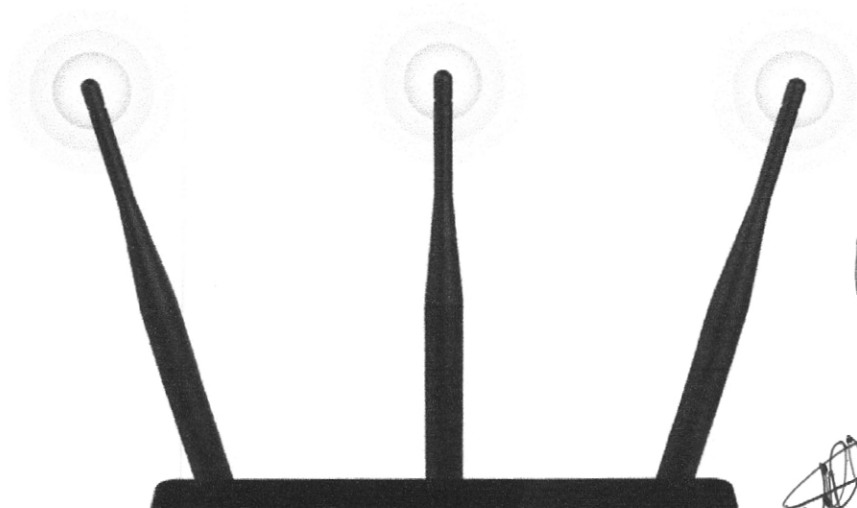
Status do produto: Ativo

- Firmware personalizada para provedores
- Wireless 802.11ac (Wi-Fi 5)
- AC750 (300Mbps<sup>1</sup> + 433Mbps<sup>1</sup>), ideal para streaming de músicas, filmes e jogos
- Melhor cobertura Wi-Fi em residências e escritórios, 3 antenas de 5 dBi oferecem máximo alcance
- Modo Repetidor<sup>2</sup> Wireless

COMPRAR

### Três antenas de alta performance para uma cobertura incrível

Desfrute de cobertura Wi-Fi em toda sua casa.





## Jogue usando a rede Wi-Fi

A nova geração Wi-Fi AC permite desfrutar benefícios de velocidades sem fios mais rápidas com melhor cobertura de sinal, permitindo com que aplicações de jogos na rede Wi-Fi funcionem adequadamente.

## Dual Band

Bandas de rede Wi-Fi diferentes para necessidades distintas.  
Faça mais, conecte com mais performance e menos interferência.



## Tecnologia MIMO Conecte mais dispositivos em sua rede Wi-Fi

Com a tecnologia MIMO é possível conectar diferentes aparelhos (tablets, smartphones e Smart TVs) em um único roteador com excelente performance de conexão.

*Handwritten signatures and scribbles:*

- A scribble at the top right.
- A signature "MEO" in the middle right.
- A signature "Olimpia" at the bottom right.
- Other illegible scribbles and signatures.