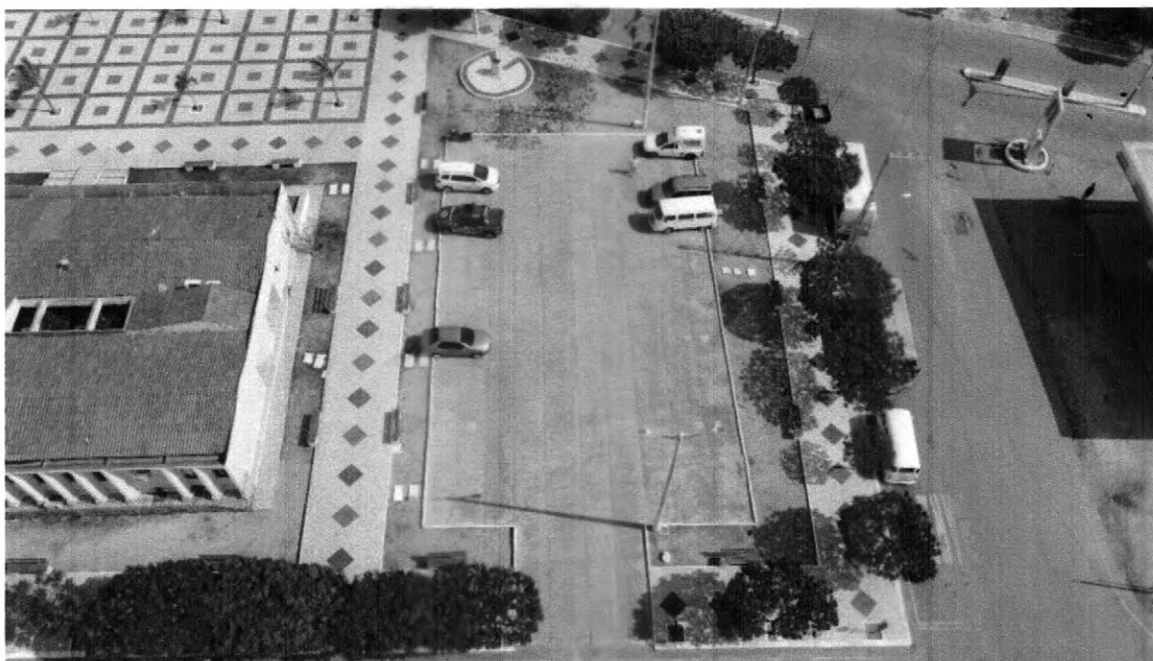
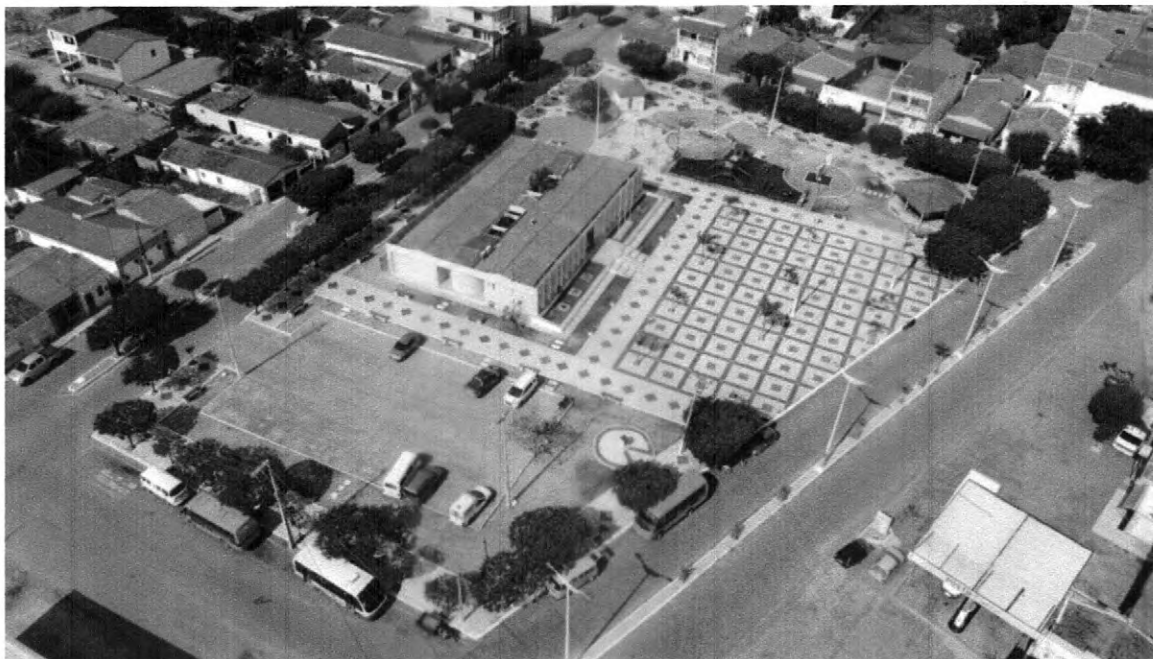


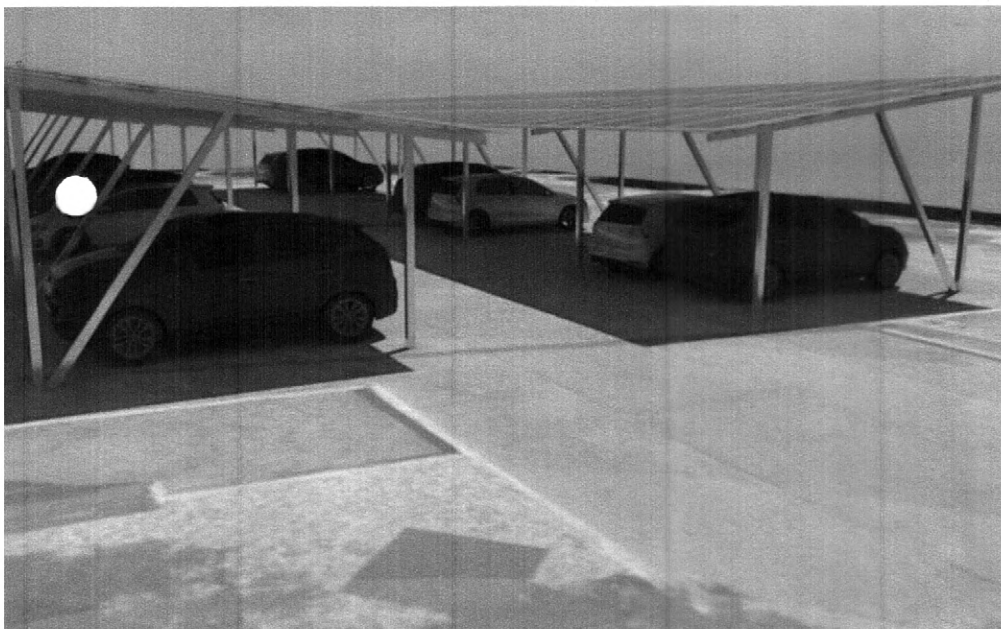
PROJETO DE ESTRUTURA PARA SUPORTE DE SISTEMA MUNICÍPIO DE IRAUÇUBA, CEARÁ



IMAGENS AÉREAS DO LOCAL DE SITUAÇÃO



FOTOVOLTÁICO

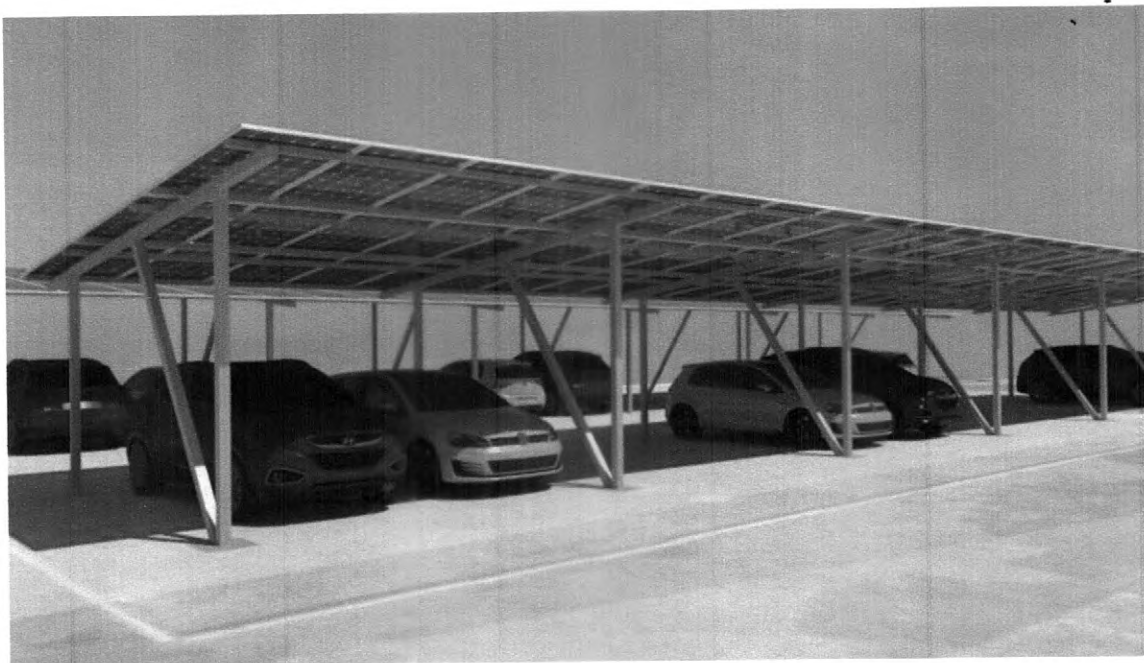
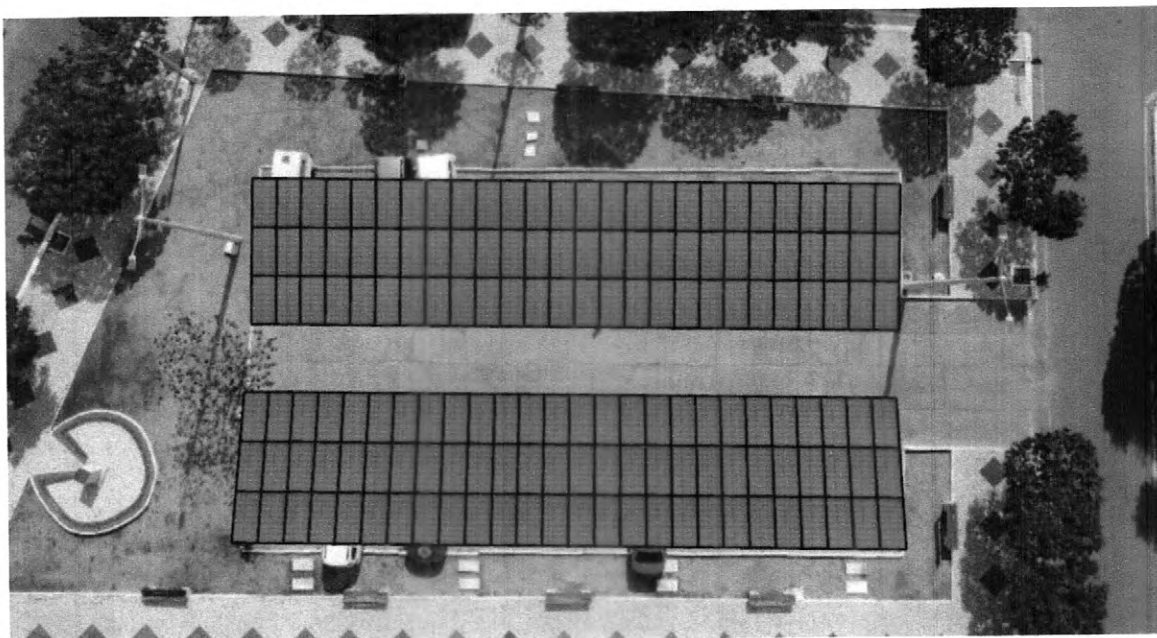


Ch
03/08

PROJETO DE ESTRUTURA PARA SUPORTE DE SISTEMA MUNICÍPIO DE IRAUÇUBA, CEARÁ

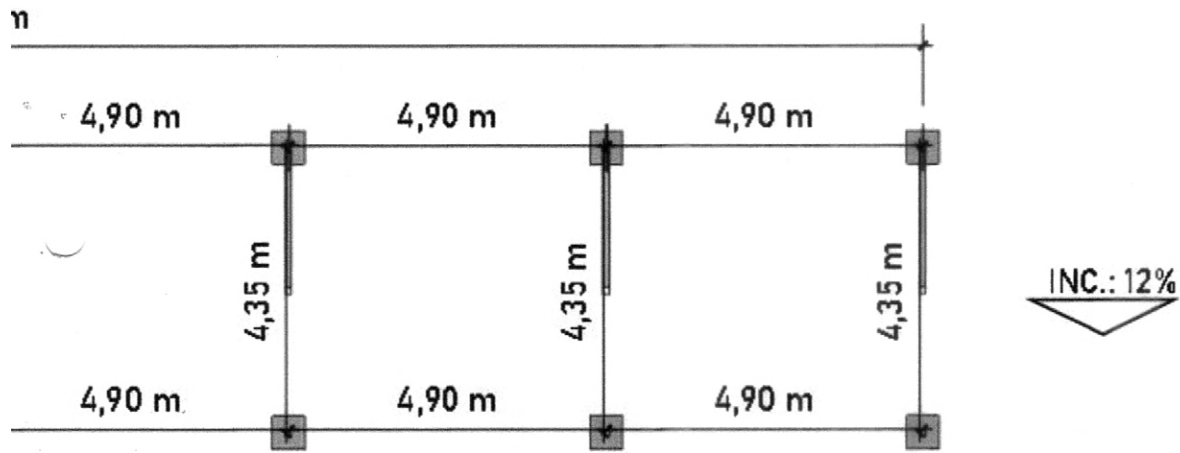


IMAGENS 3D DO PROJETO

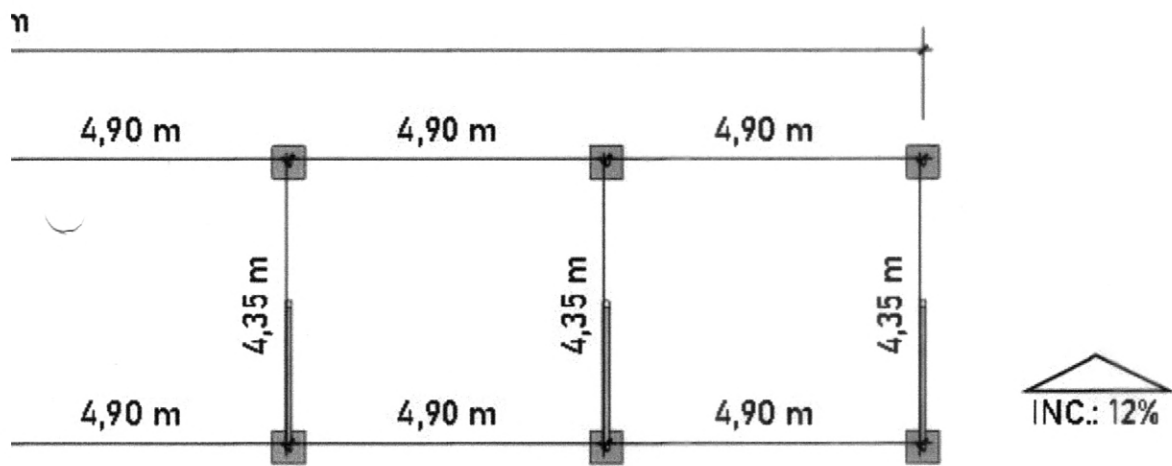


Prefeitura Municipal de Irauçuba/CE
 Fls. 184 A
 Rubrica

OTOVOLTÁICO



reto armado



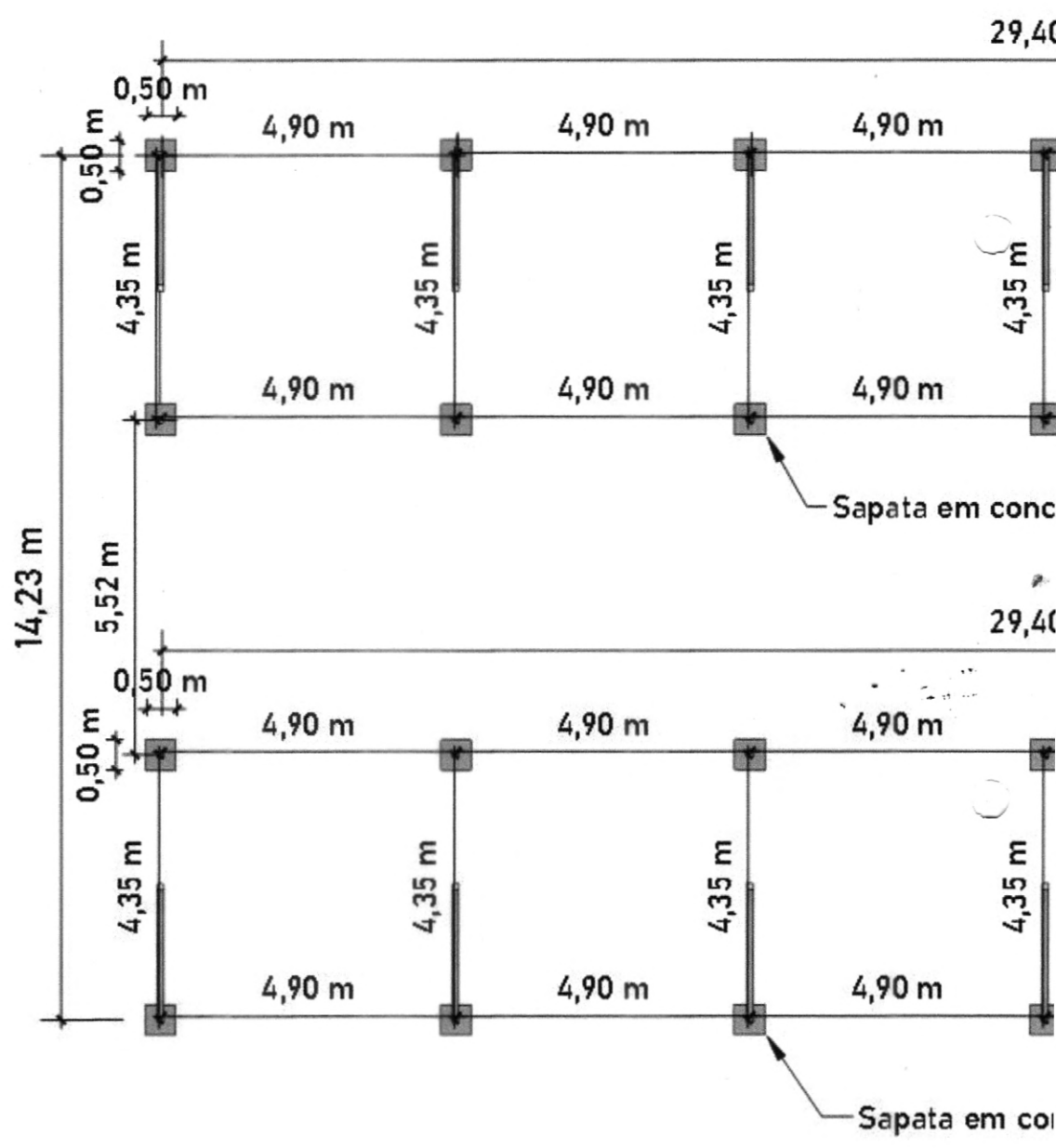
reto armado

Daniel Kenji de Alencar OHI
 RNP:061043786-0
 Eng. Eletricista

04/08

PROJETO DE ESTRUTURA PARA SUPORTE DE SISTEMA

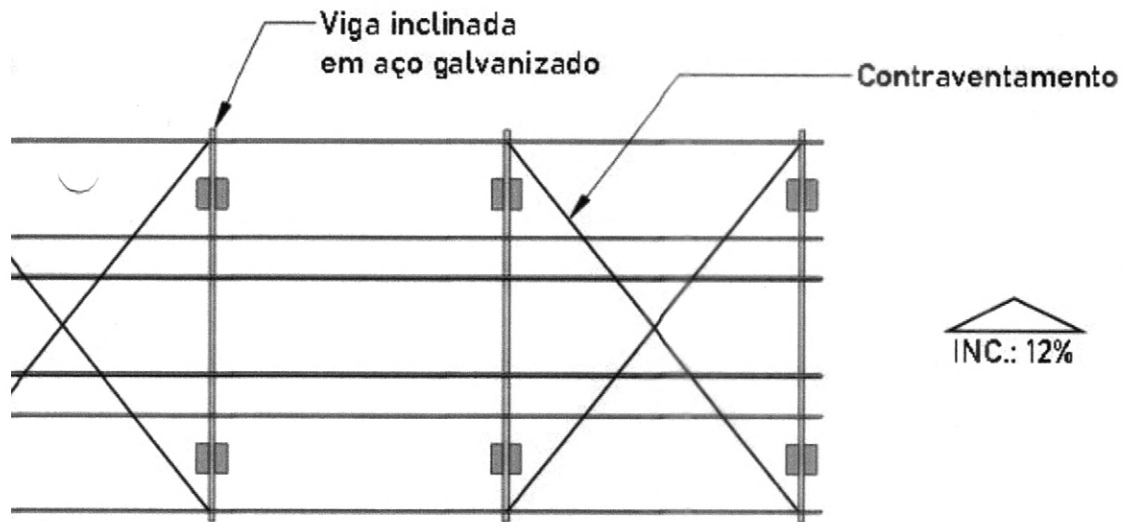
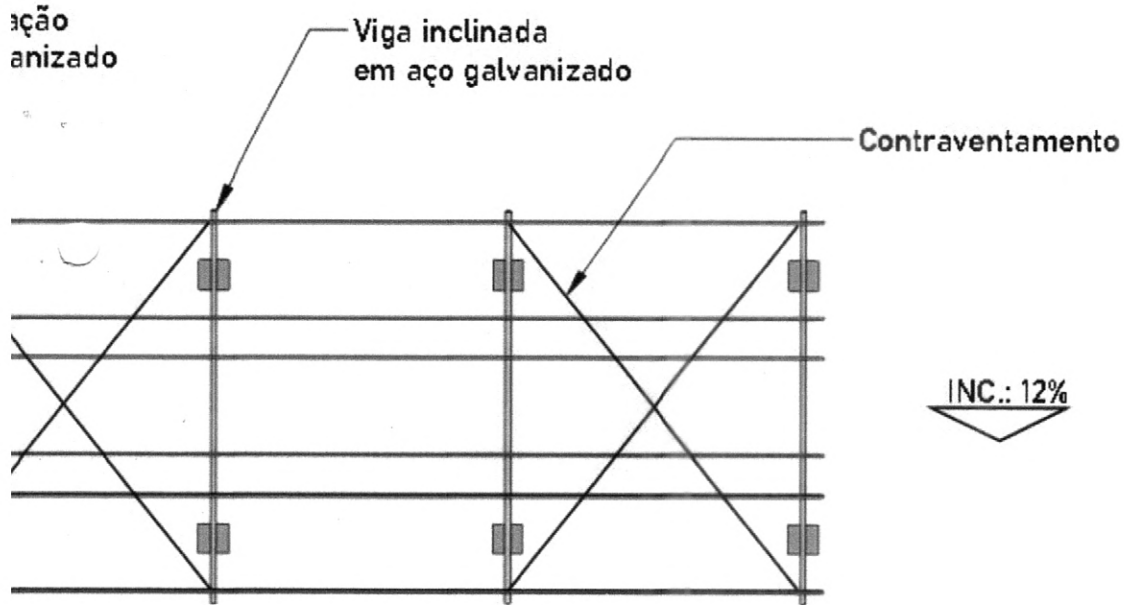
MUNICÍPIO DE IRAUÇUBA, CEARÁ



PLANTA DE PILARES



OTOVOLTÁICO

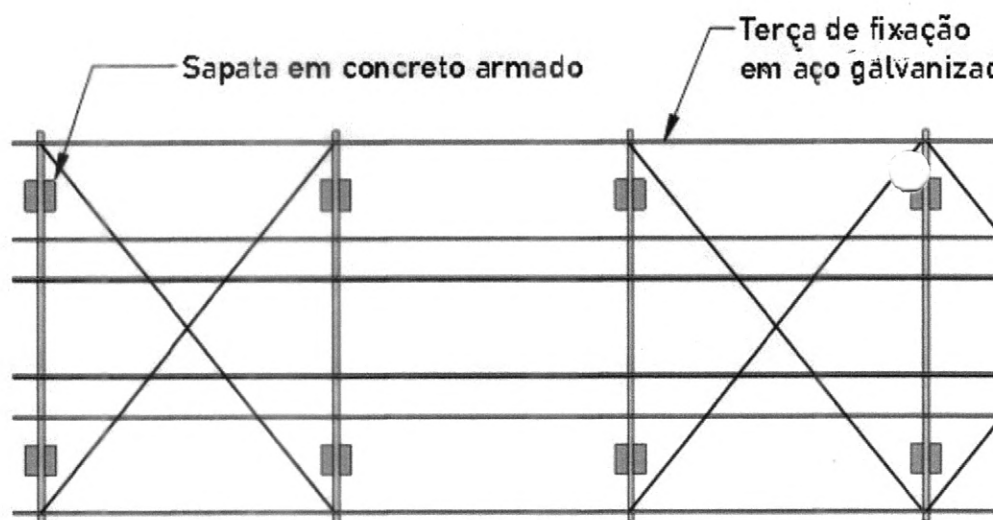
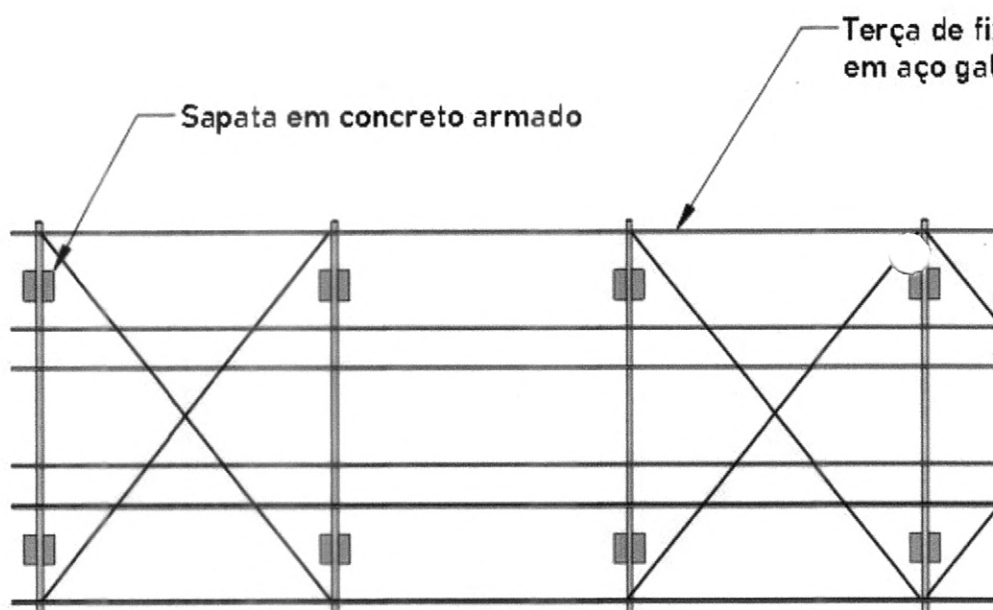


Daniel Kenji de Alencar OHI
RNP: 061043786-0
Eng. Eletricista

05/08

PROJETO DE ESTRUTURA PARA SUPORTE DE SISTEMA

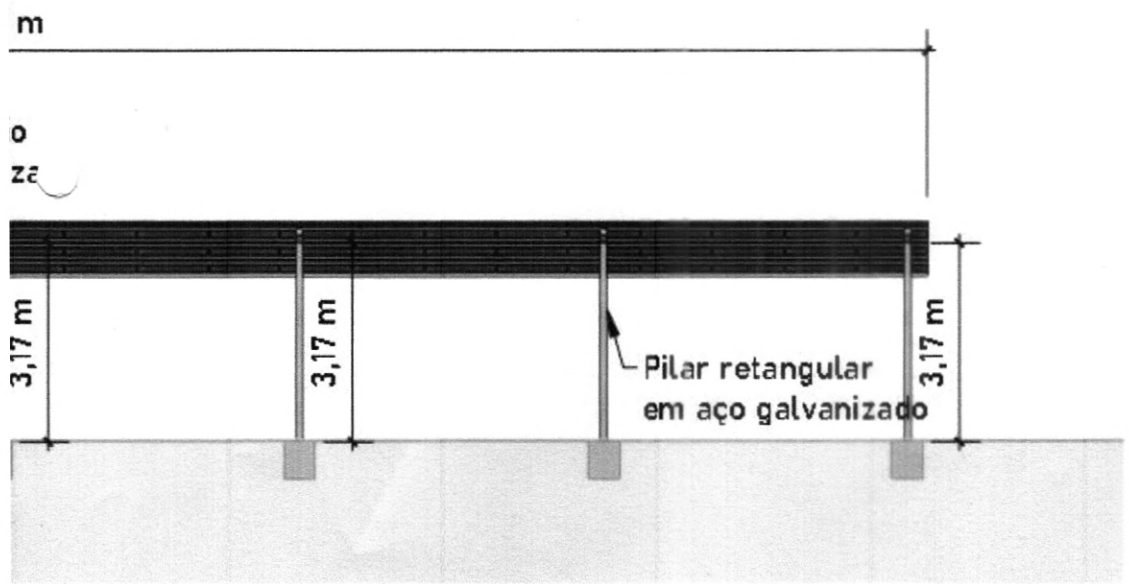
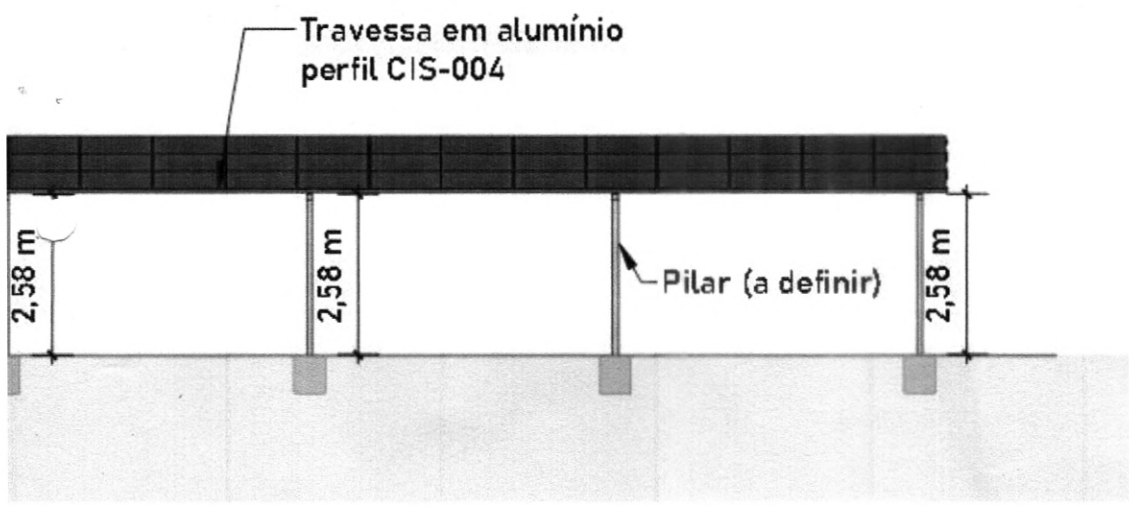
MUNICÍPIO DE IRAUÇUBA, CEARÁ



PLANTA DE TERÇAS



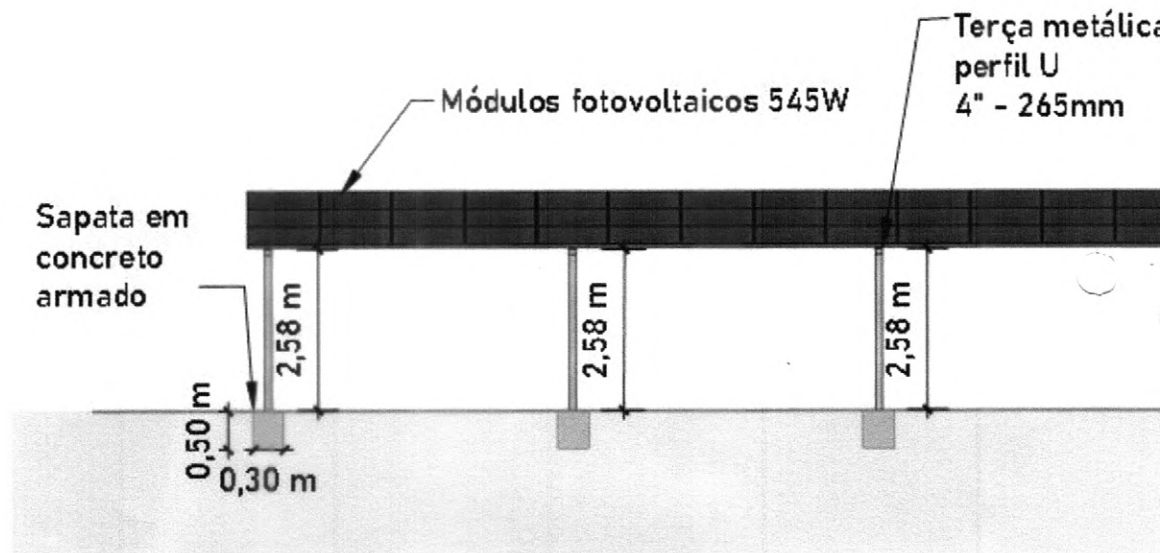
OTOVOLTÁICO



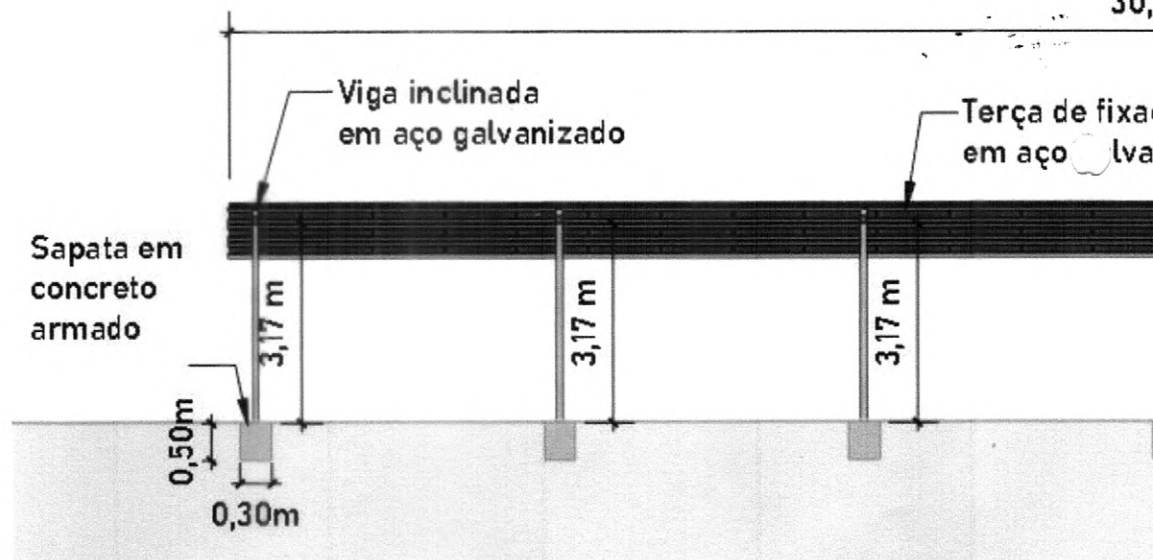
Daniel Kenji de Alencar OP
RNP:061043786-0
Eng. Eletricista

PROJETO DE ESTRUTURA PARA SUPORTE DE SISTEMA

MUNICÍPIO DE IRAUÇUBA, CEARÁ



VISTA FRONTAL

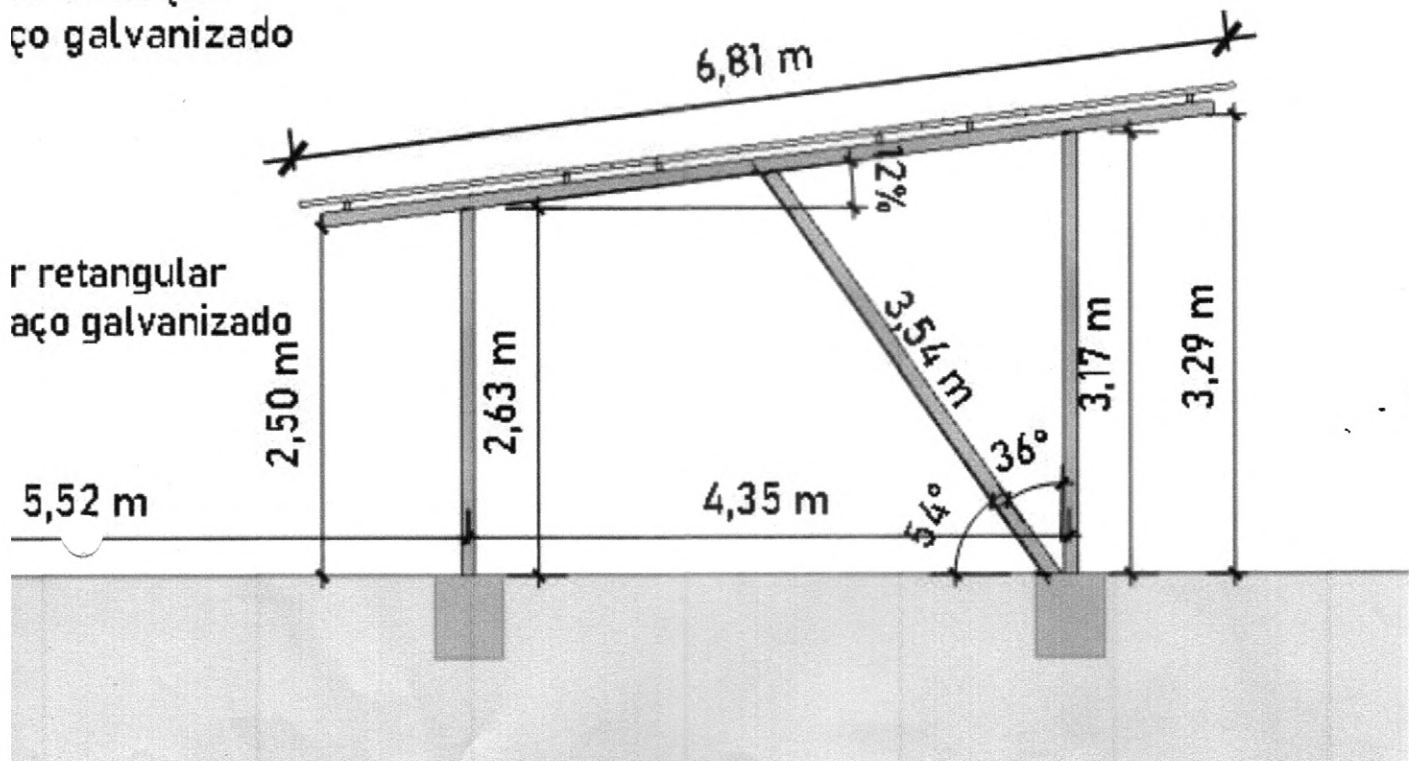


VISTA FUNDOS

FOTOVOLTAICO

painel solar cristalino 545W

estrutura de fixação
em aço galvanizado

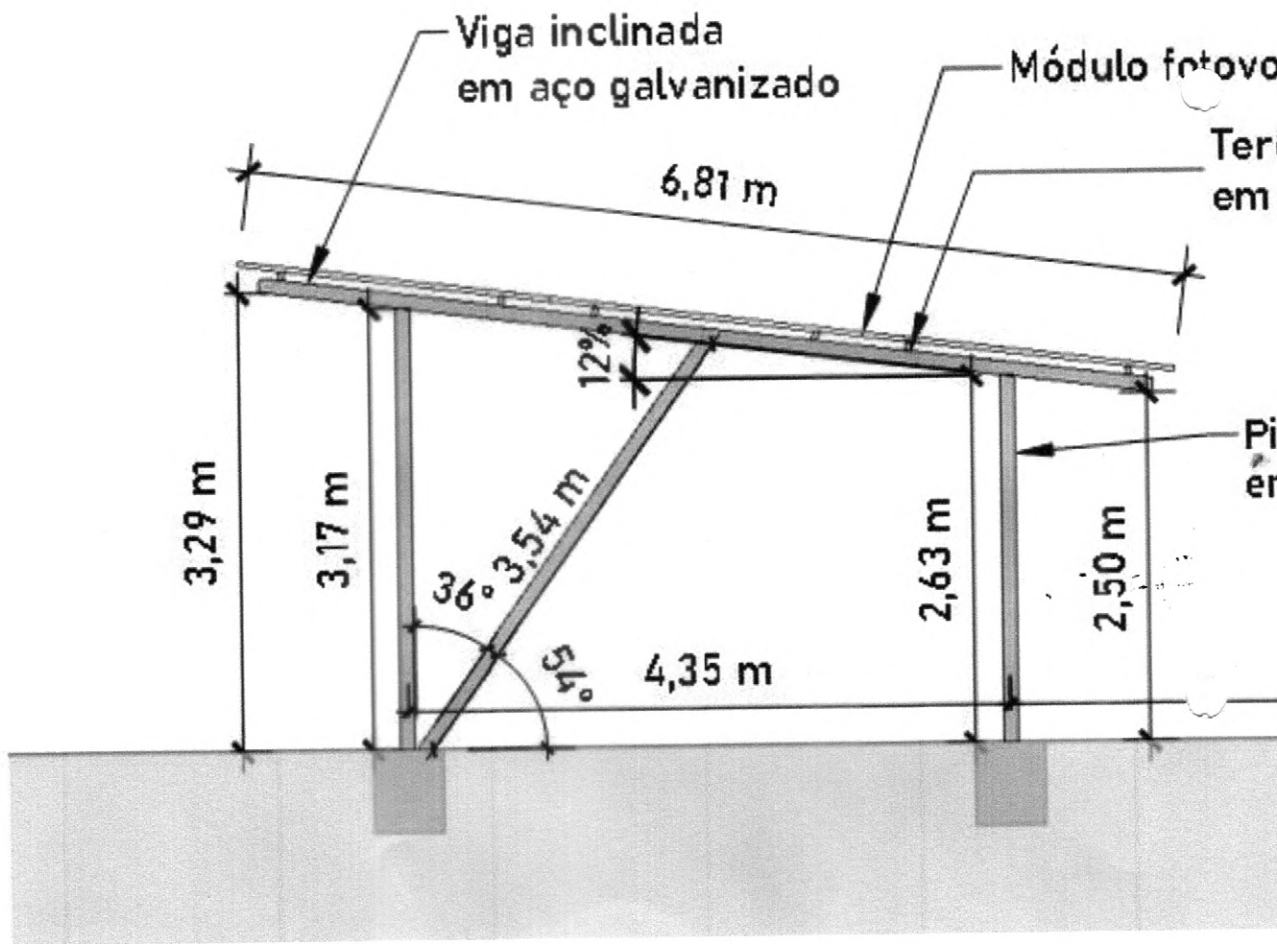


Daniel Kenji de Alencar OHI
RNP: 061043786-0
Eng. Eletricista



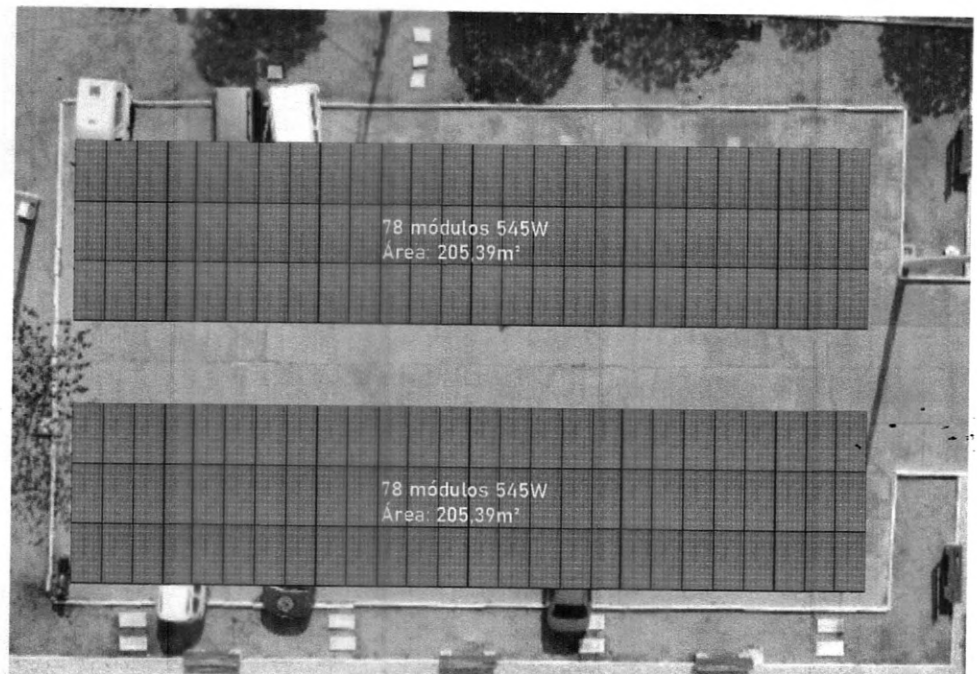
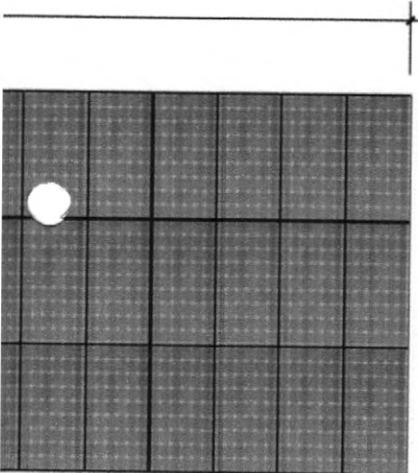
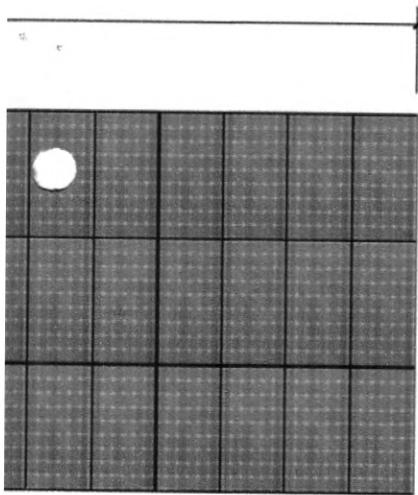
PROJETO DE ESTRUTURA PARA SUPORTE DE SISTEMA

MUNICÍPIO DE IRAUÇUBA, CEARÁ



VISTA LATERAL

OTOVOLTÁICO



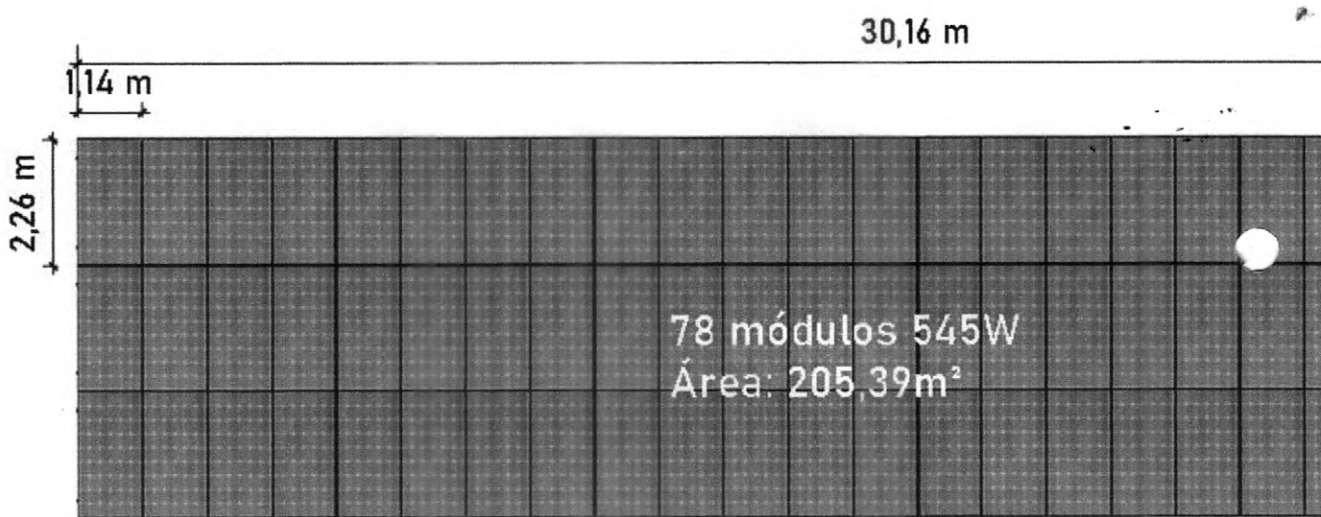
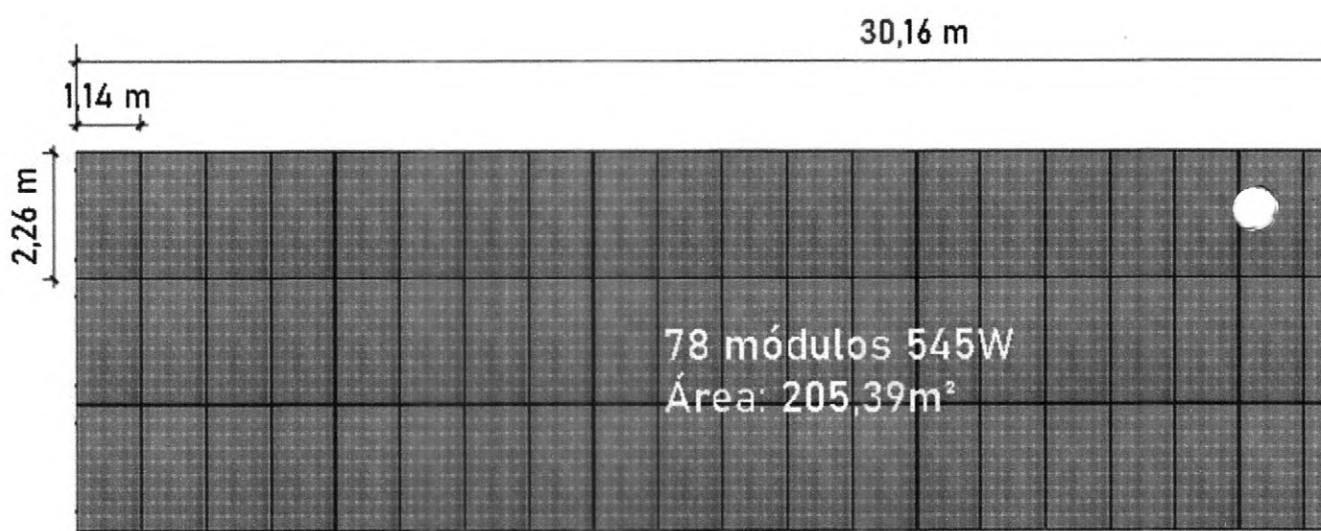
AR 545W
ENTRE MÓDULOS: 2,5cm


Daniel kenji de Alencar OHI
RNP:061043786-0
Eng. Eletricista

08/08

PROJETO DE ESTRUTURA PARA SUPORTE DE SISTEMA

MUNICÍPIO DE IRAUÇUBA, CEARÁ

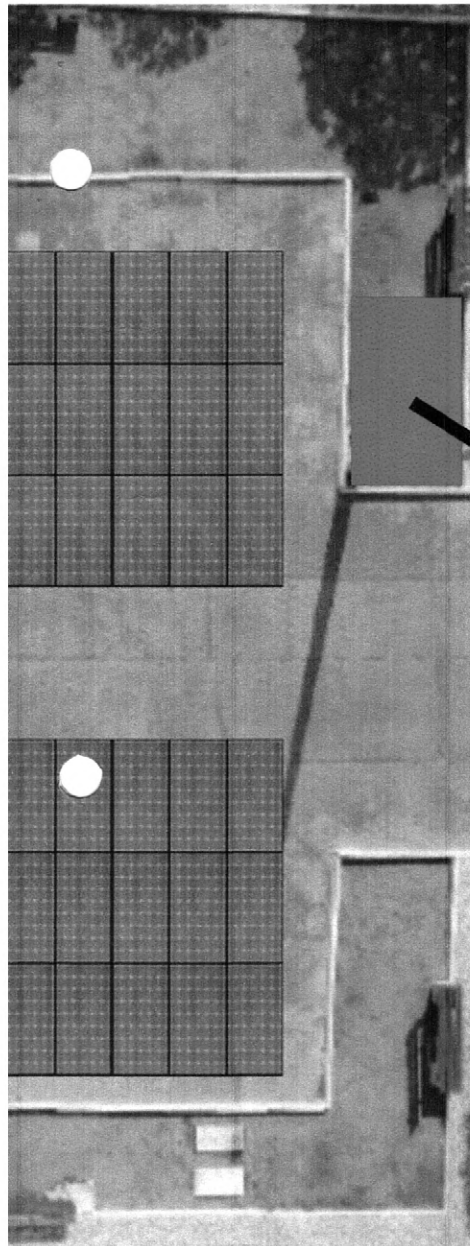


PLANTA MÓDULOS

MÓDULOS QSO
ESPAÇAMENT



OTOVOLTÁICO

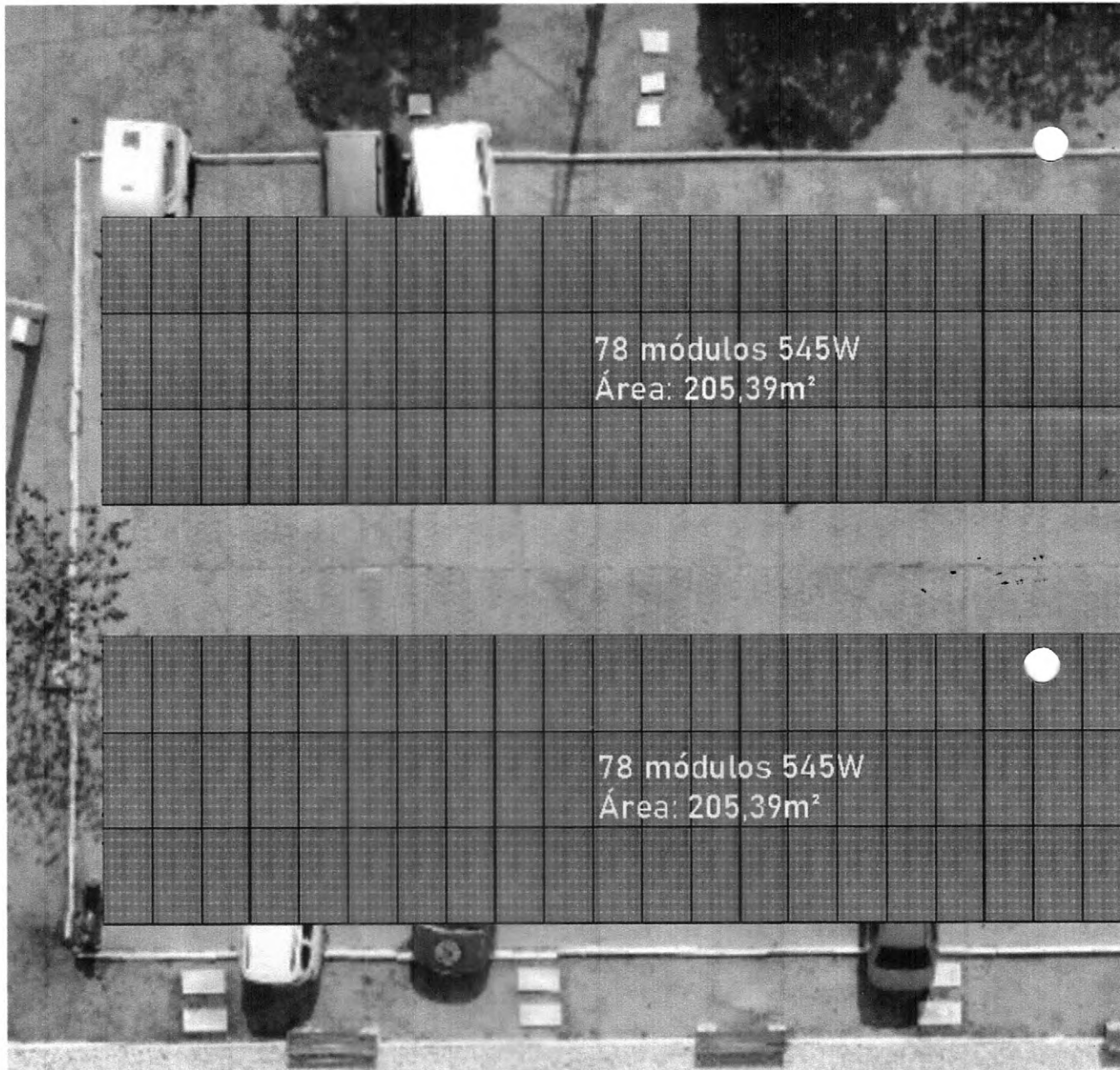


LOCAÇÃO DA CASA
DO INVERSOR


Daniel Roberto de Almeida
CPF: 0682043786-0
Eng. Eletricista

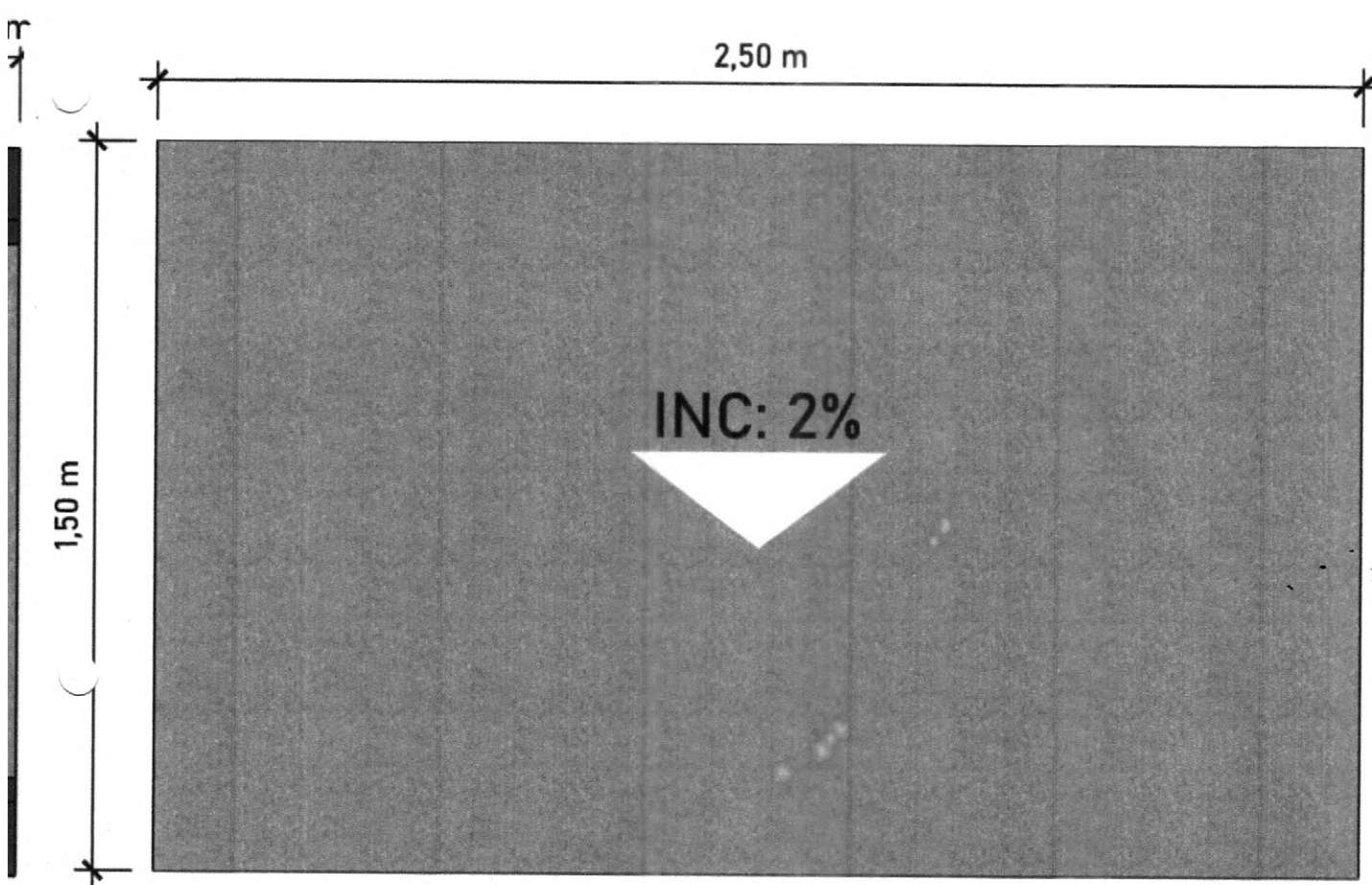


PROJETO DE ESTRUTURA PARA SUPORTE DE SISTEMA MUNICÍPIO DE IRAUÇUBA, CEARÁ CASA DO INVERSOR





FOTOVOLTÁICO



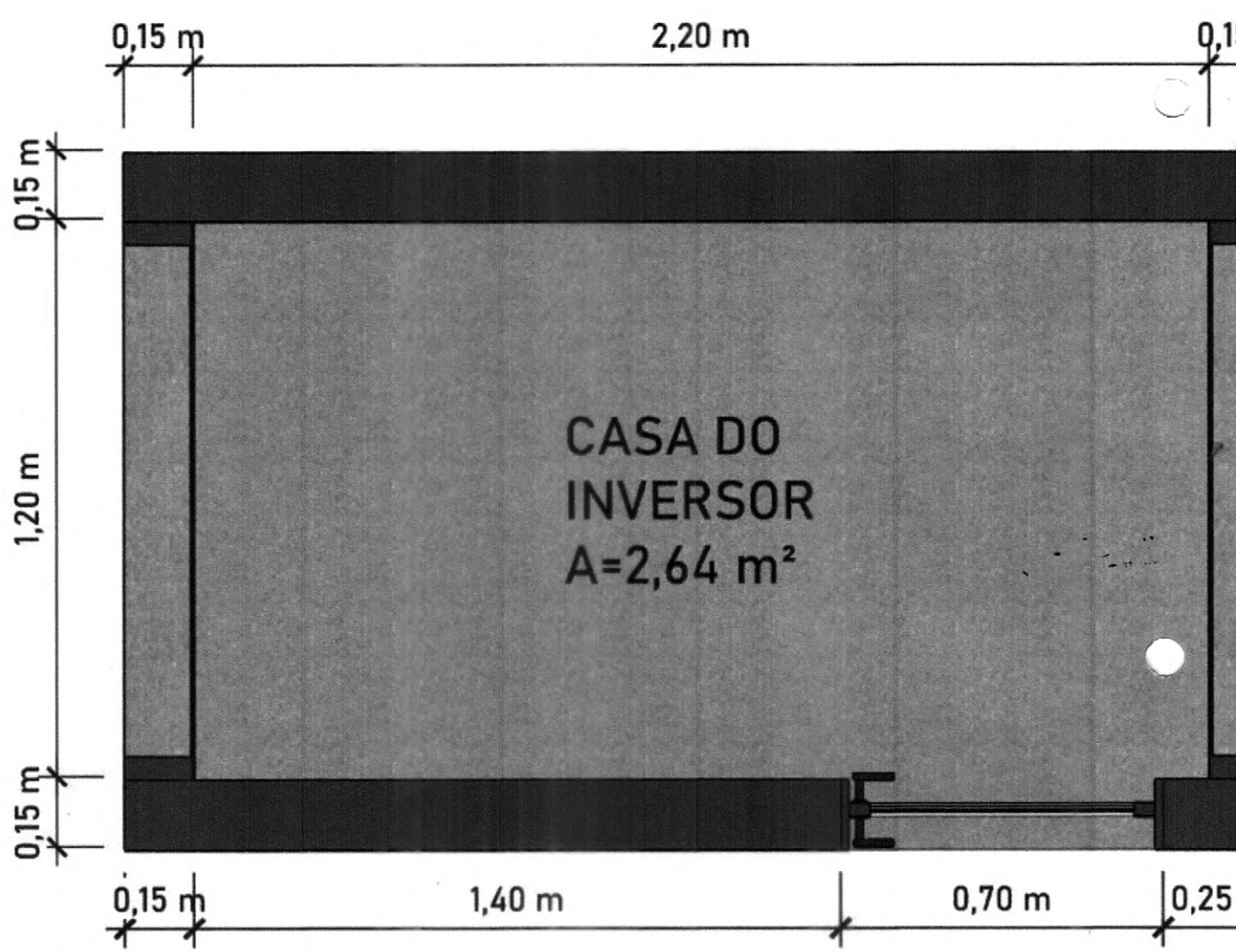
VISTA SUPERIOR


Daniel Kenji de Alencar Curi
RNP:061043786-0
Eng. Eletricista

PROJETO DE ESTRUTURA PARA SUPORTE DE SISTEMA

MUNICÍPIO DE IRAUÇUBA, CEARÁ

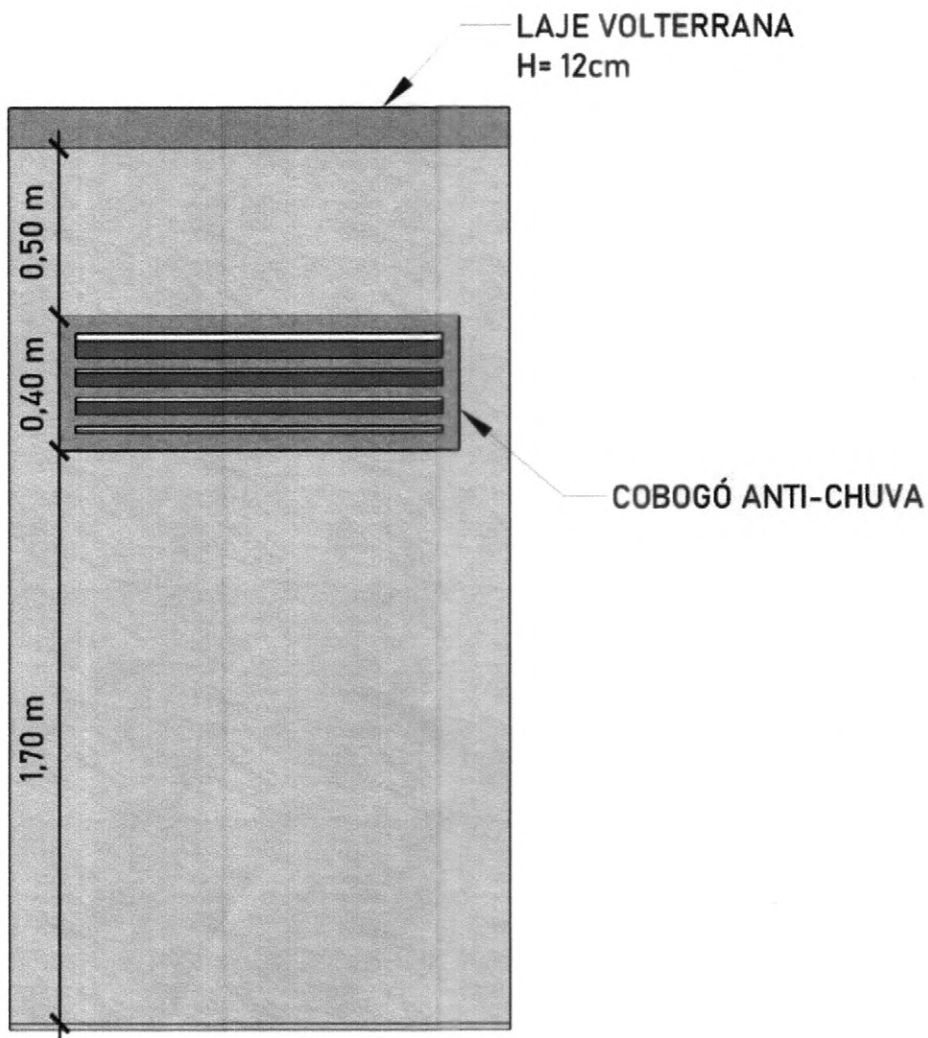
CASA DO INVERSOR



PLANTA BAIXA



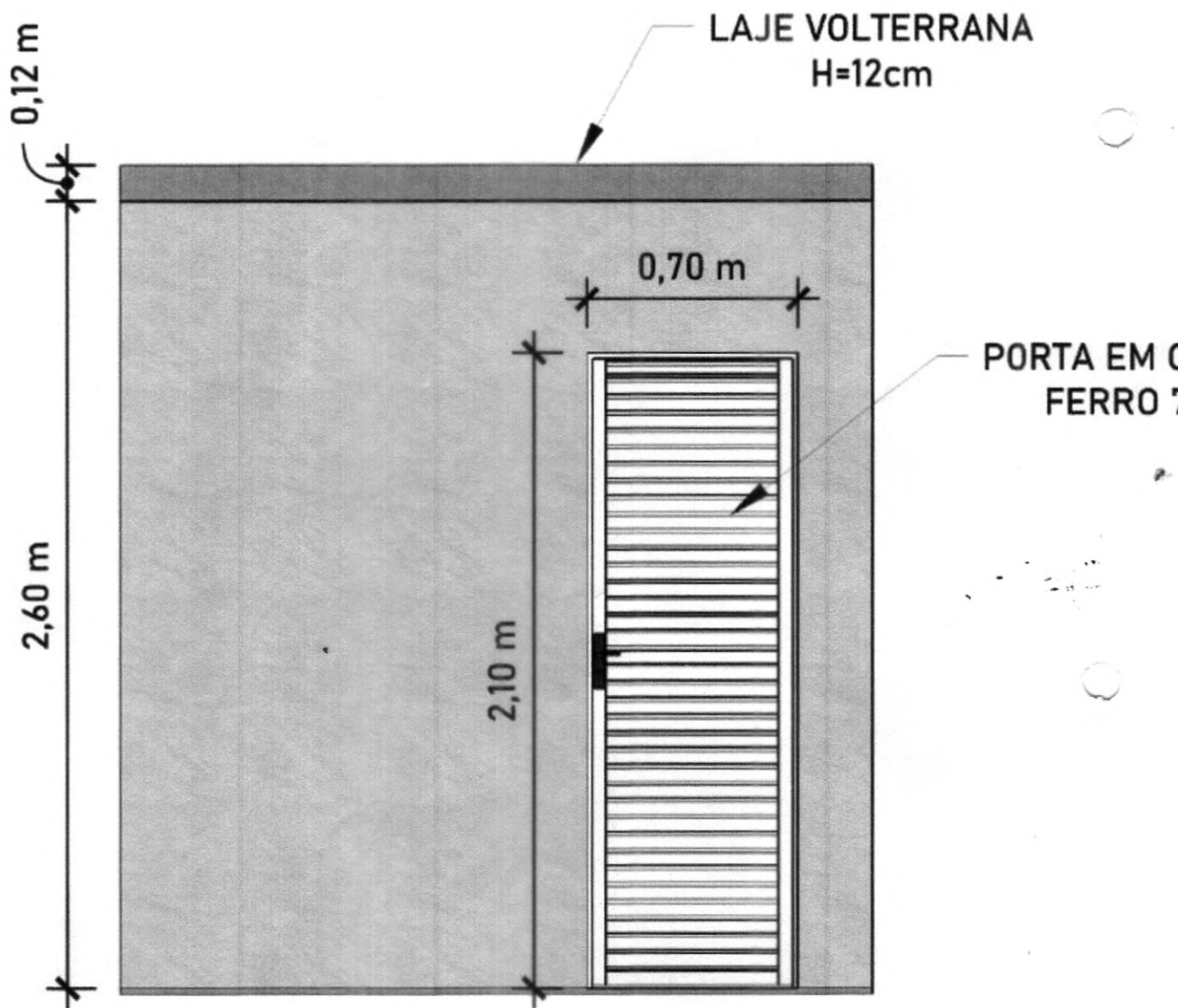
OTOVOLTAÍCO



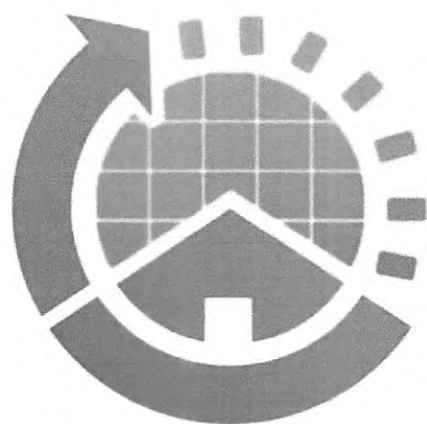
**FACHADA LATERAL
(OS DOIS LADOS SÃO IGUAIS)**

cd
Daniel Kenji de Alencar
RNP:061043786-0
Eng. Eletricista

PROJETO DE ESTRUTURA PARA SUPORTE DE SISTEMA
MUNICÍPIO DE IRAUÇUBA, CEARÁ
CASA DO INVERSOR



FACHADA FRONTAL



INVEST

ENERGIA SOLAR

PROPOSTA COMERCIAL
Prefeitura Municipal de Irauçuba

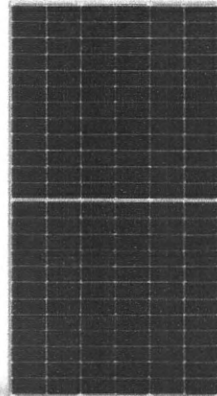
HORIZONTE, 07/07/2022



INVEST
ENERGIA SOLAR

EQUIPAMENTOS

Módulos Solares



Características Técnicas

Potência: 545W

Garantia (Defeitos): 12 anos

Garantia (84,5% Eficiência): 25 anos

Marca: CANADIAN

Tecnologia: MONO

Inversor

Características Técnicas

Modelo: ON GRID MAX125KTL3-X LV 125KW TRIF

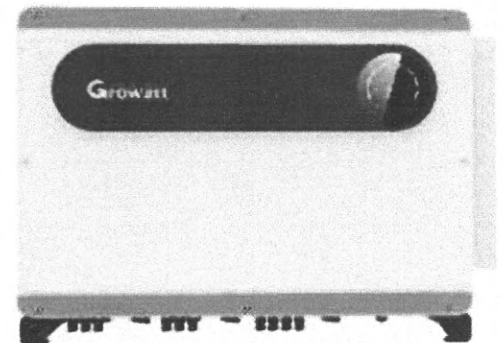
Fabricante: GROWATT

Garantia: 10 anos

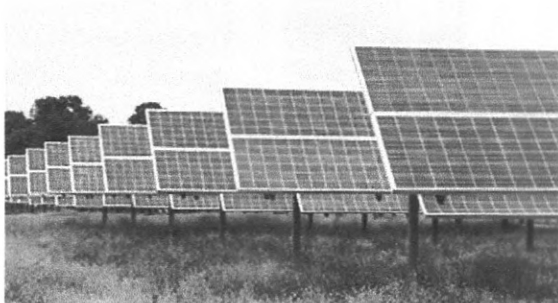
Sistema de Monitoramento: Wireless

Tensão de Funcionamento: 380 V

Potência Máx. Nominal AC: 125.000 KW



Estruturas de Fixação



Características Técnicas

Tipo: SOLO

Fabricante: ROMAGNOLE

Garantia: 20 anos

Material: Alumínio

Handwritten signature