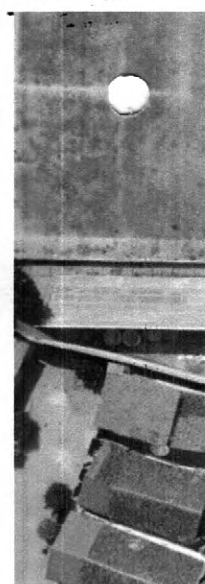
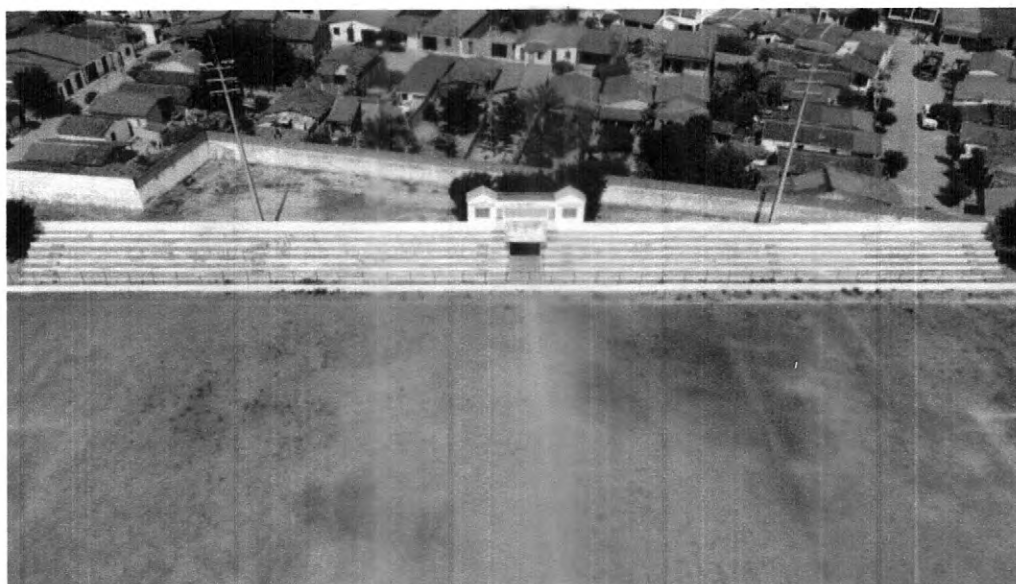


PROJETO DE ESTRUTURA PARA SUPORTE DE SISTEMA F

MUNICÍPIO DE IRAUÇUBA, CEARÁ

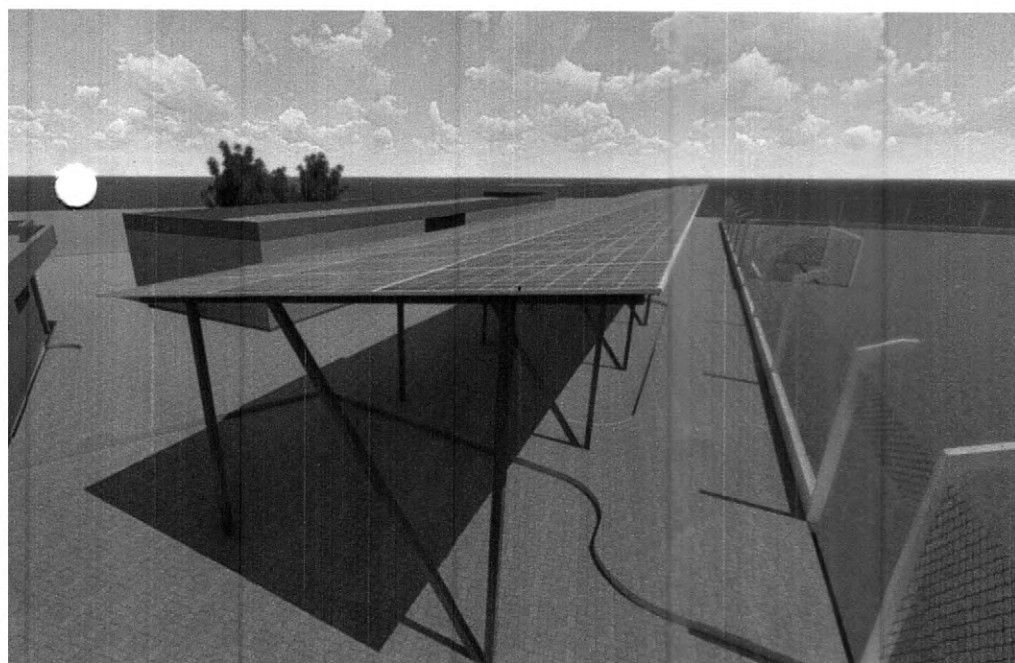


IMAGENS ATUAIS DO LOCAL FEITAS POR DRONE



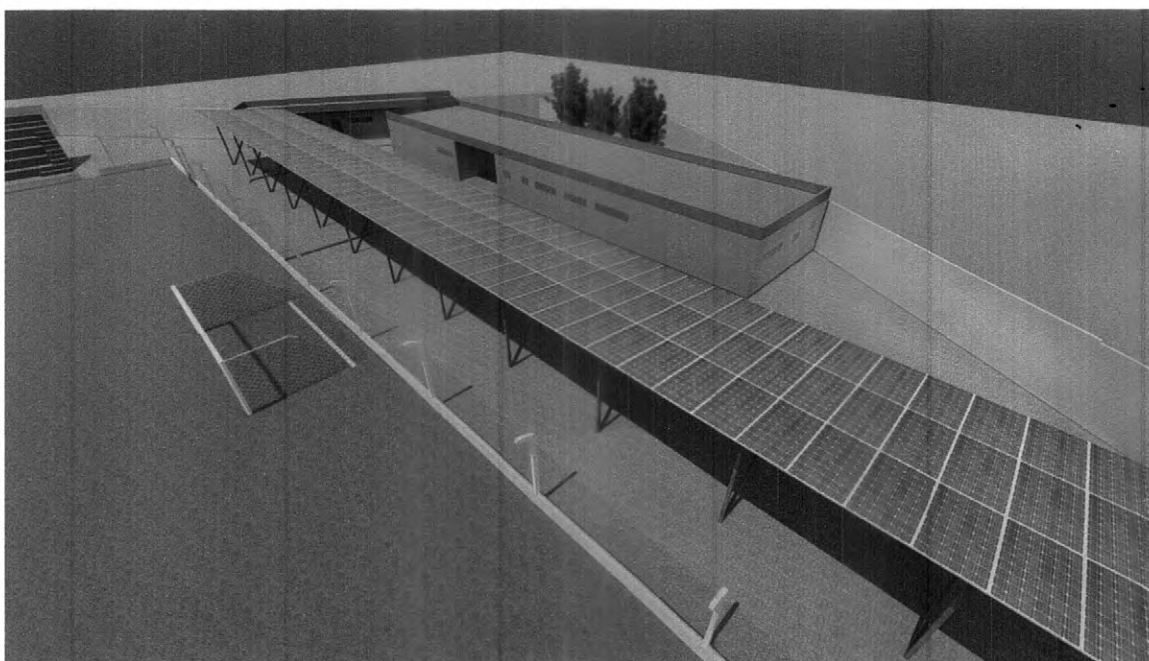
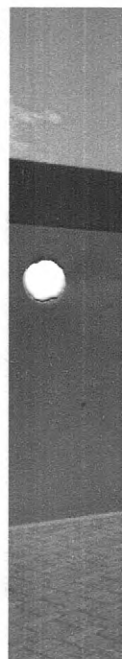
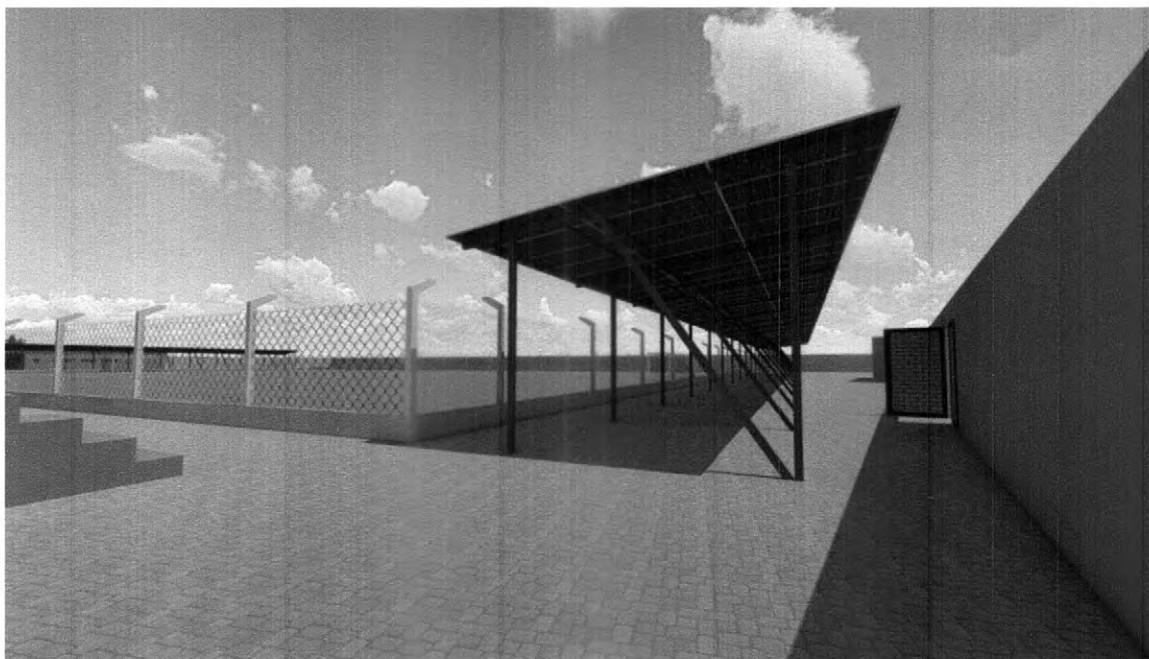


OTOVOLTÁICO



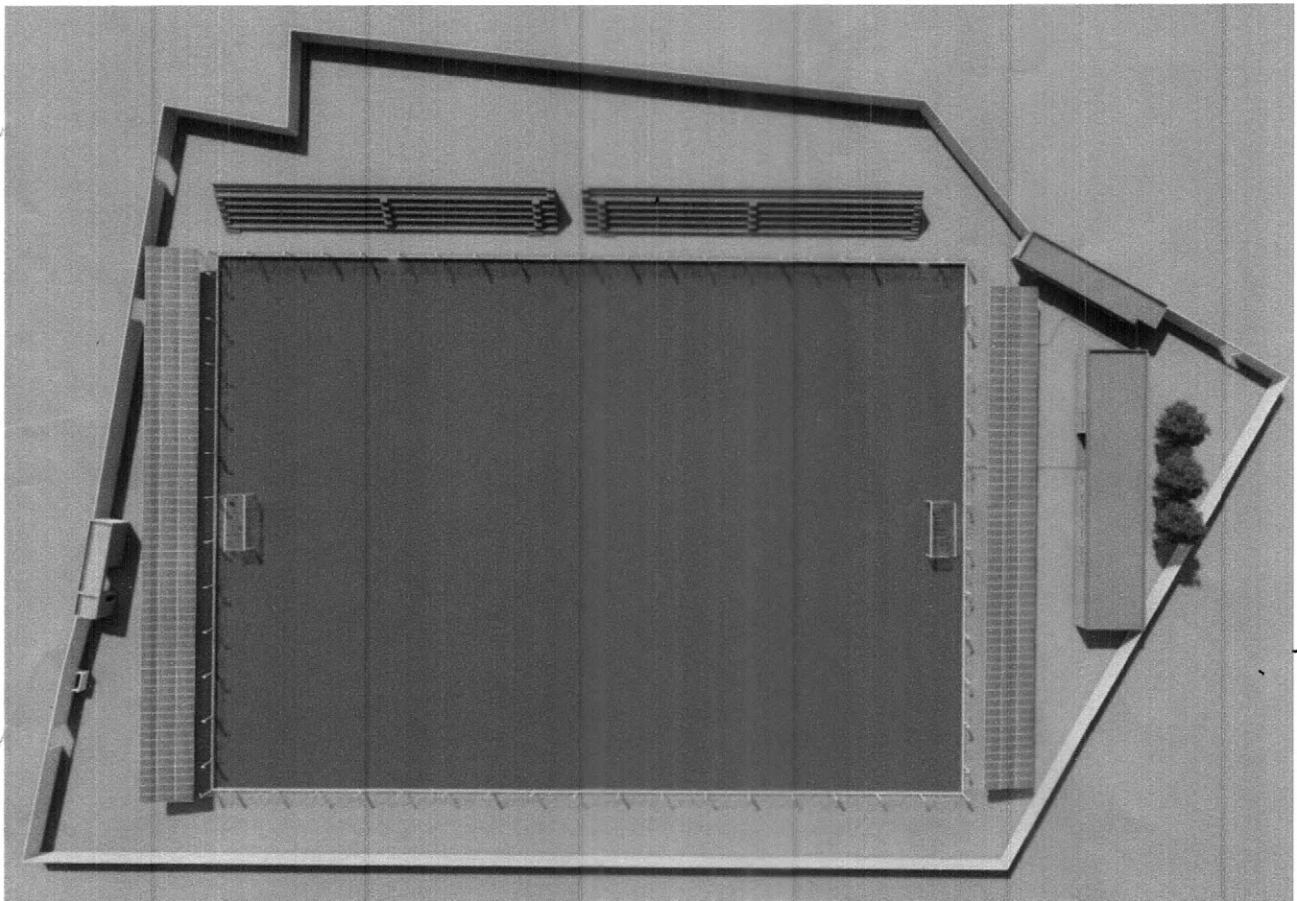
PROJETO DE ESTRUTURA PARA SUPORTE DE SISTEMA F

MUNICÍPIO DE IRAUÇUBA, CEARÁ



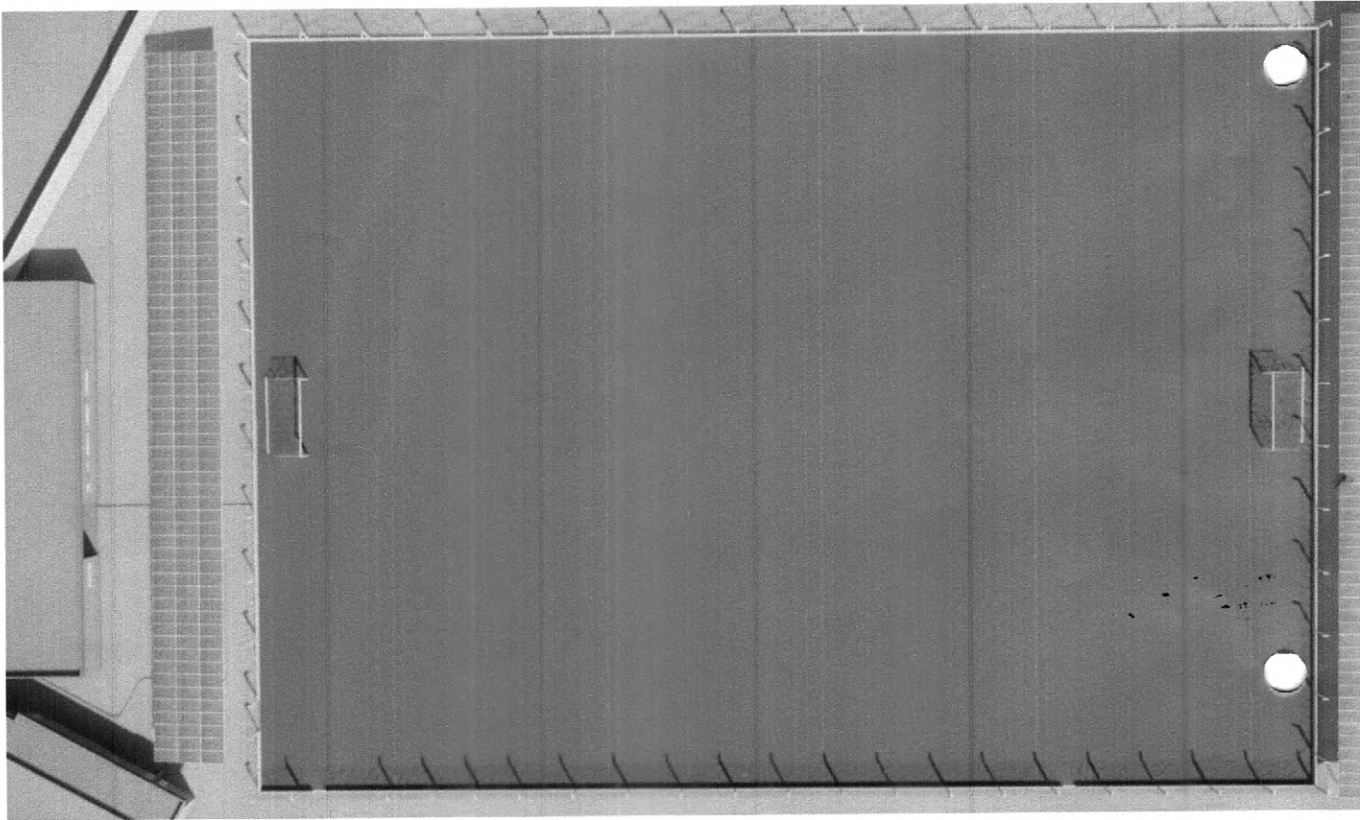


TOVOLTÁICO



PROJETO DE ESTRUTURA PARA SUPORTE DE SISTEMA F

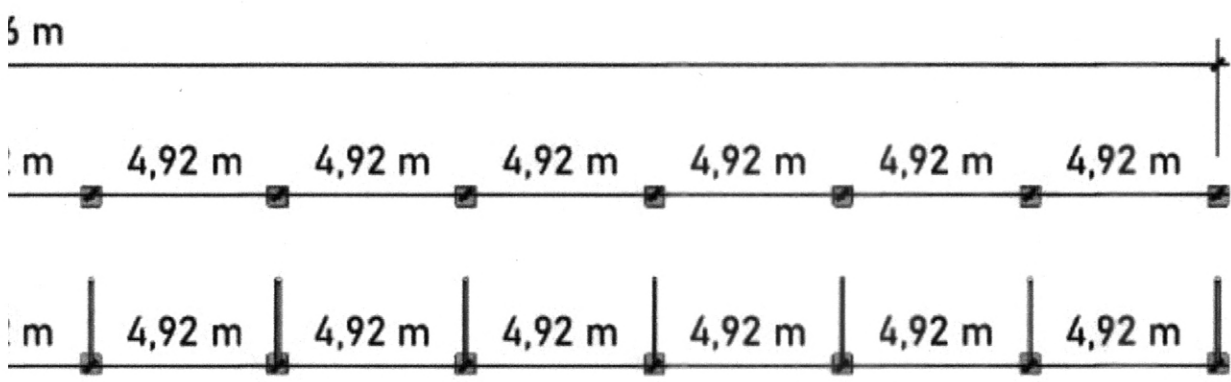
MUNICÍPIO DE IRAUÇUBA, CEARÁ





TOVOLTÁICO

IC.: 12%

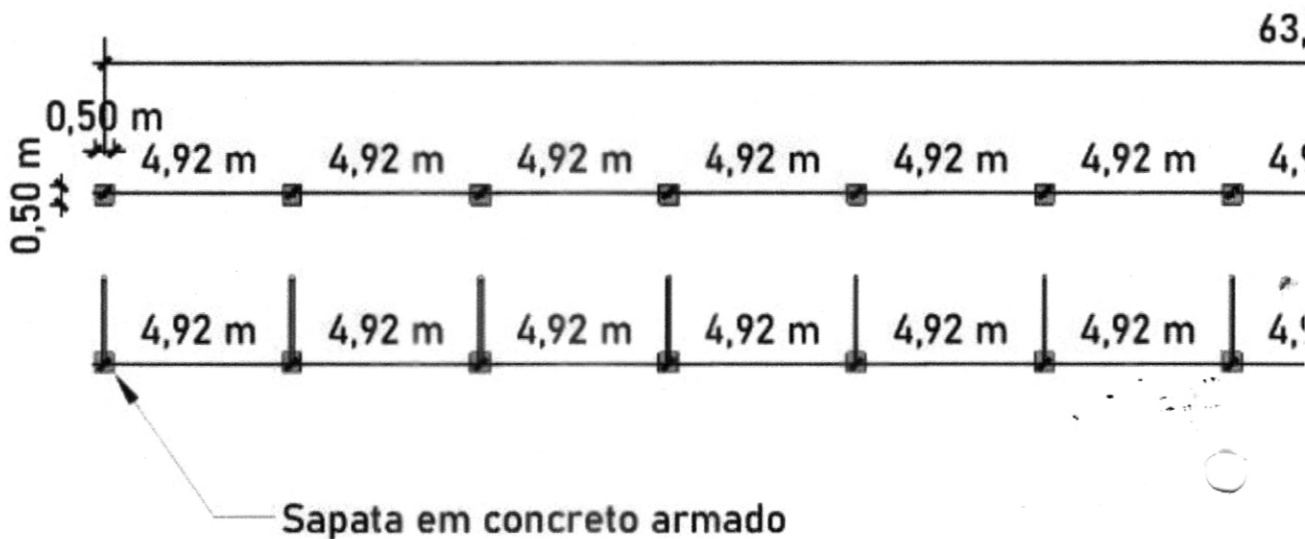


ódulos)

Daniel
Daniel Keny de Alencar OHI
RNP: 061043786-0
Eng. Eletricista

PROJETO DE ESTRUTURA PARA SUPORTE DE SISTEMA F

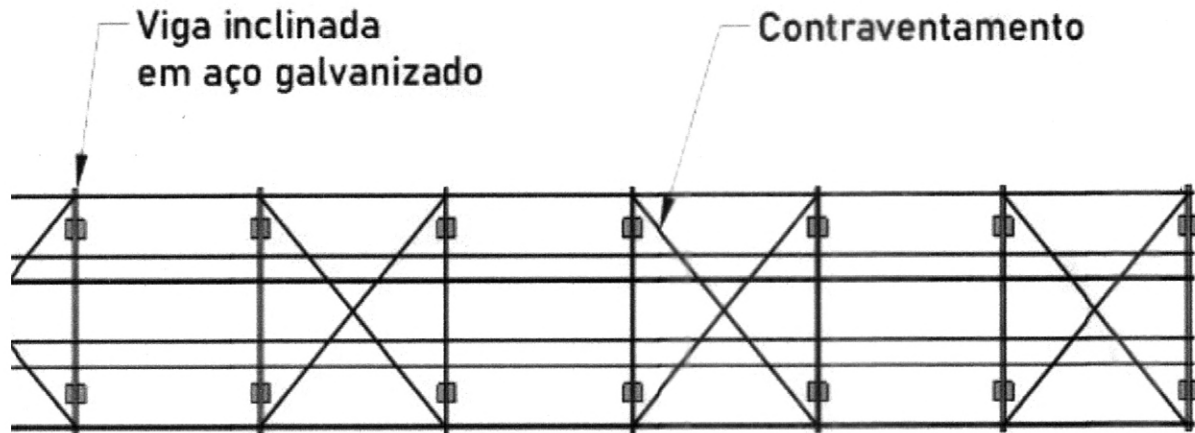
MUNICÍPIO DE IRAUÇUBA, CEARÁ



PLANTA DE PILARES - FILEIRA DE PLACAS 1 (168 m)

TOVOLTÁICO

∴ 12%

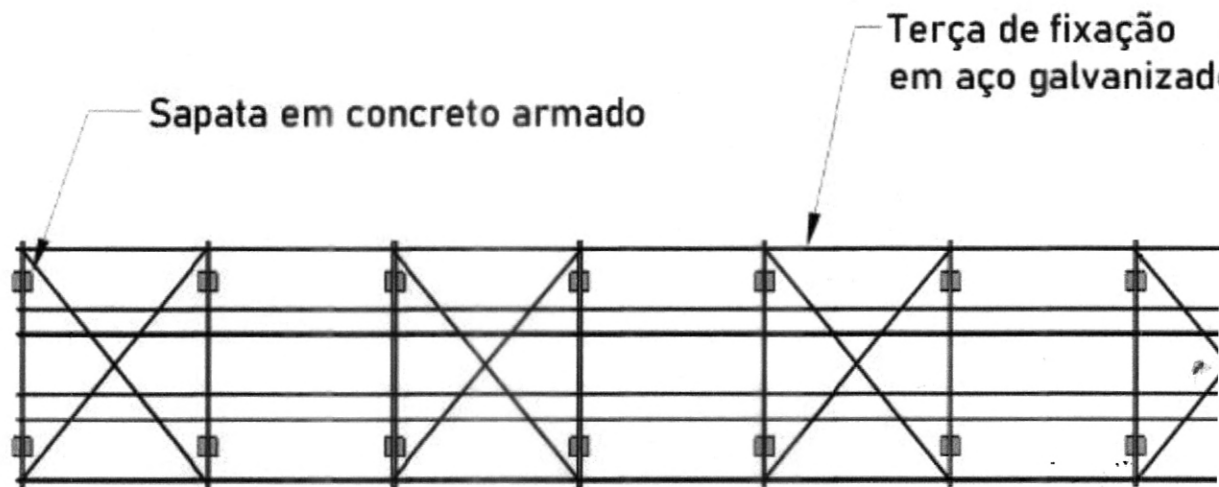


ulos)

Daniel Kenji de Alencar OHI
RNP: 061043785-0
En

PROJETO DE ESTRUTURA PARA SUPORTE DE SISTEMA F

MUNICÍPIO DE IRAUÇUBA, CEARÁ



PLANTA DE TERÇAS - FILEIRA DE PLACAS 1 (168 m)

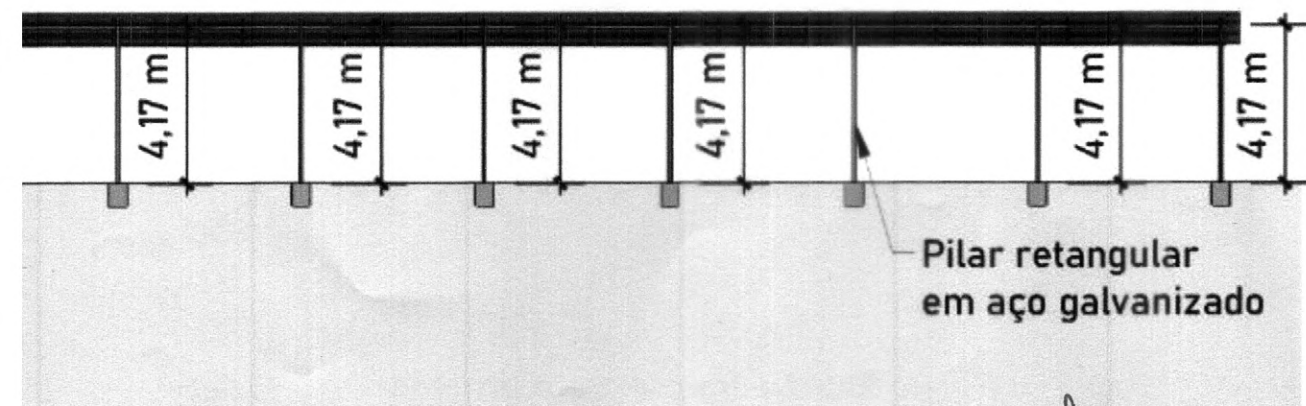


OTOVOLTÁICO

de fixação
o galvanizado



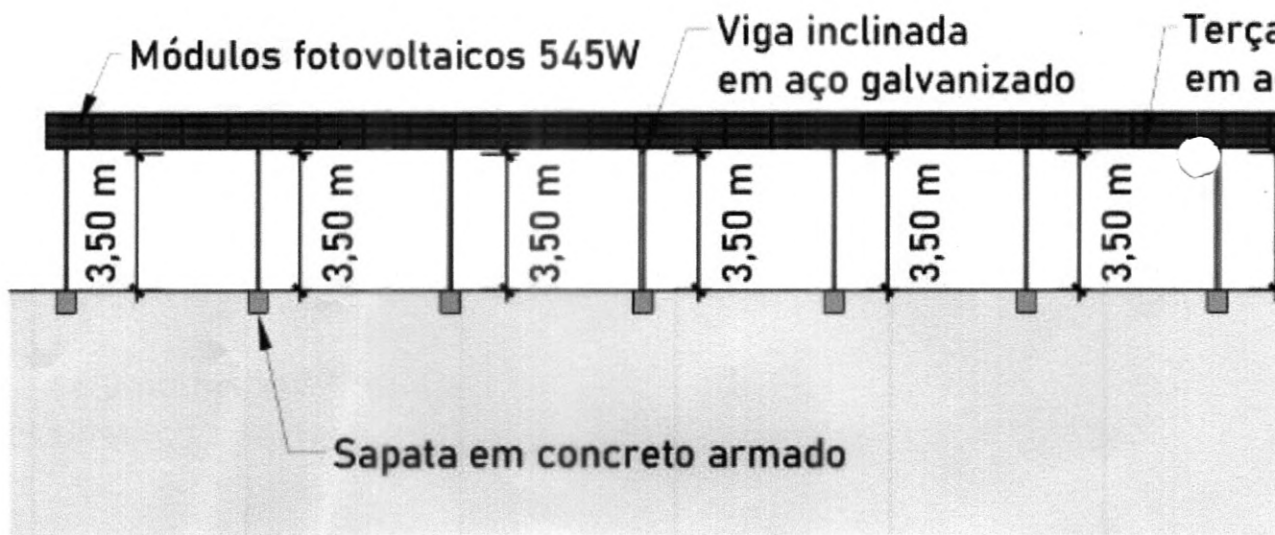
16 m



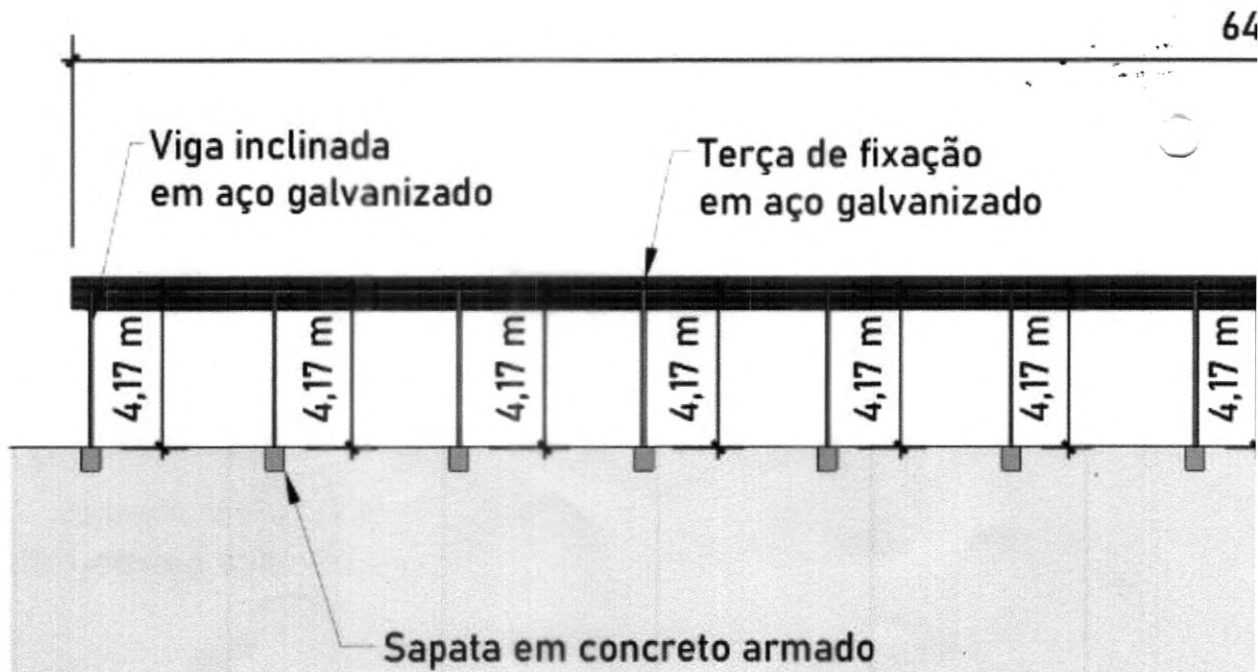
Daniel Keny de Alencar OHI
RNP-061-33786-0
En.

PROJETO DE ESTRUTURA PARA SUPORTE DE SISTEMA F

MUNICÍPIO DE IRAUÇUBA, CEARÁ



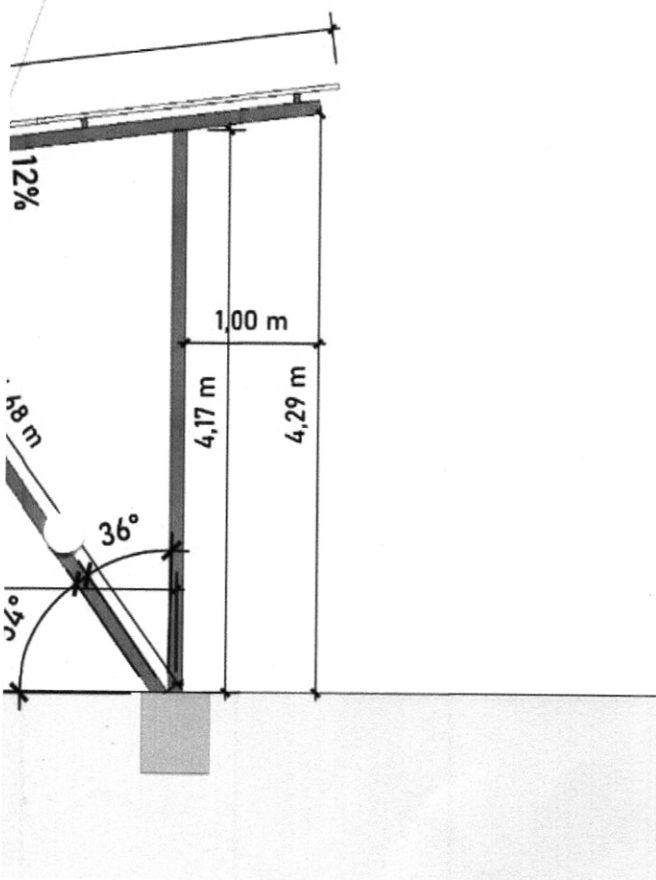
VISTA FRONTAL - FILEIRA DE PLACAS 01 (168 MÓDULOS)



VISTA FUNDOS - FILEIRA DE PLACAS 01 (168 MÓDULOS)

TOVOLTÁICO

545W
Fôrça de fixação
em aço galvanizado

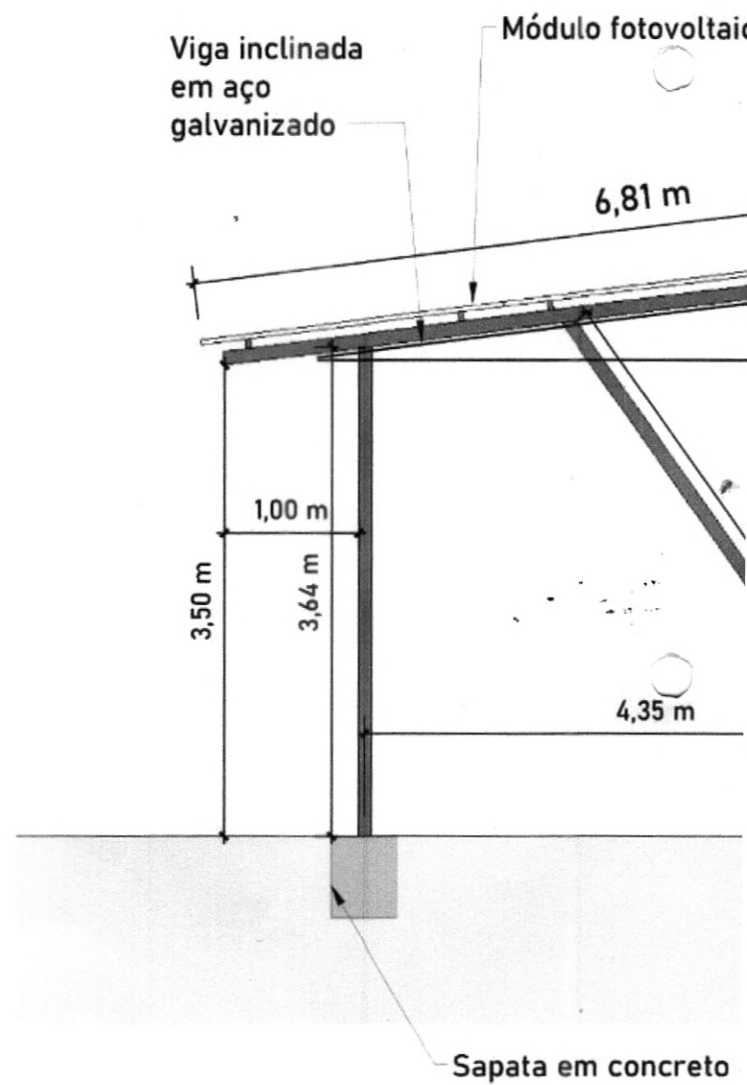


mado

sl
Daniel Kenji de Alencar OHI
RNP:061043786-0
Eng. Eletricista

PROJETO DE ESTRUTURA PARA SUPORTE DE SISTEMA F

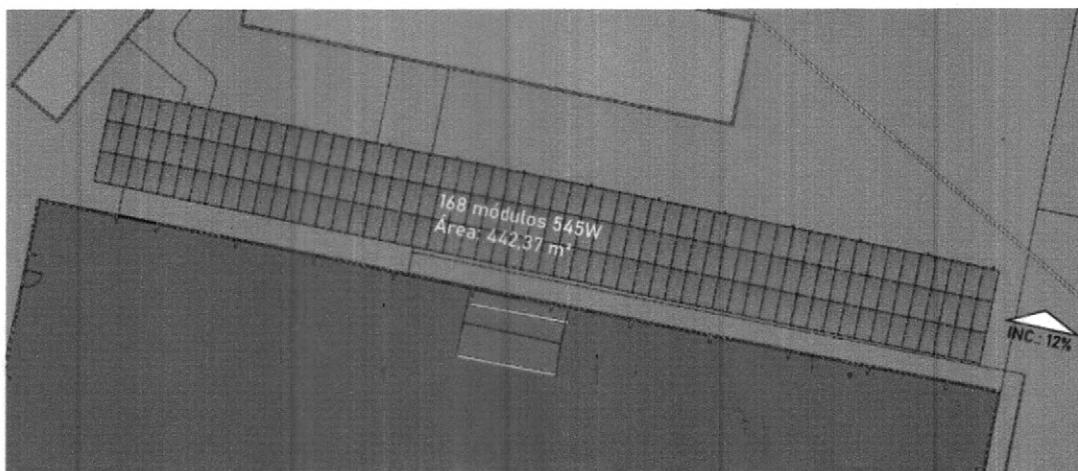
MUNICÍPIO DE IRAUÇUBA, CEARÁ



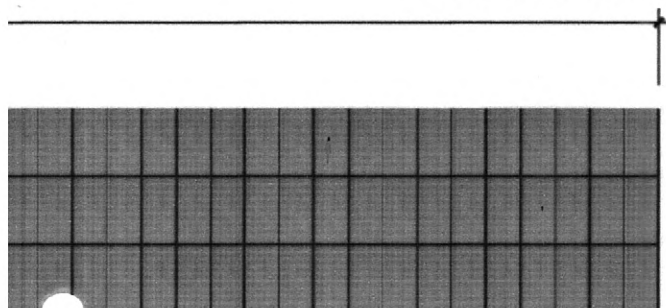
VISTA LATERAL - FILEIRA DE PLACAS 1 (168 módulos)



TOVOLTÁICO



VISTA SUPERIOR - FILEIRA DE PLACAS 1 (168 módulos)



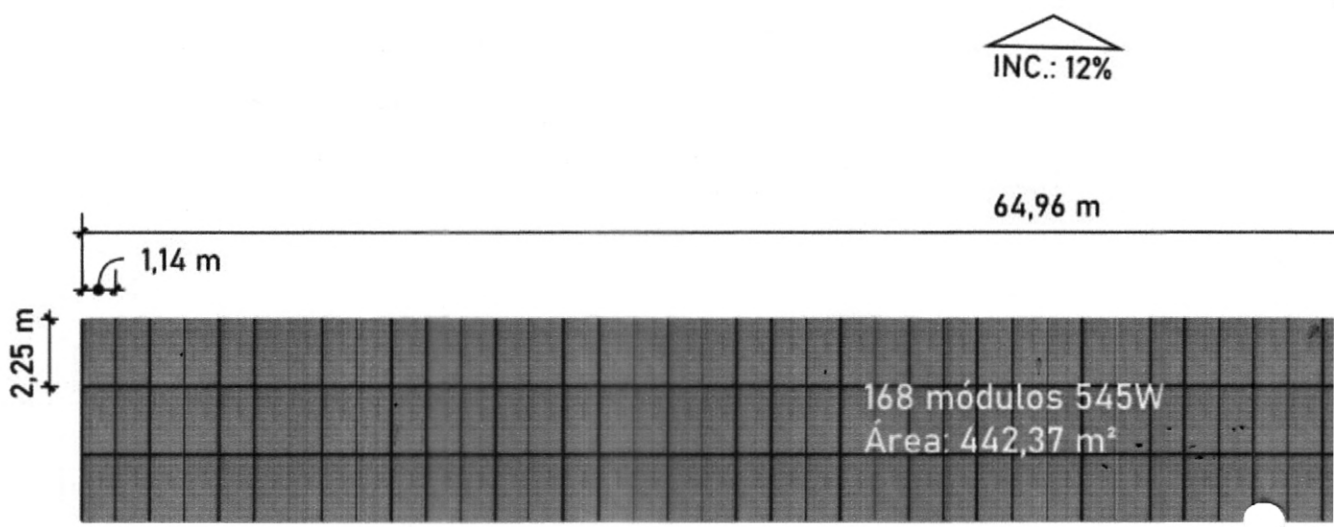
OSOLAR 545W
MENTO ENTRE MÓDULOS: 2,5 cm

Signature
Daniel Kenji de Alencar OH
RNP:061043786-0
Eng. Eletricista



PROJETO DE ESTRUTURA PARA SUPORTE DE SISTEMA F

MUNICÍPIO DE IRAUÇUBA, CEARÁ



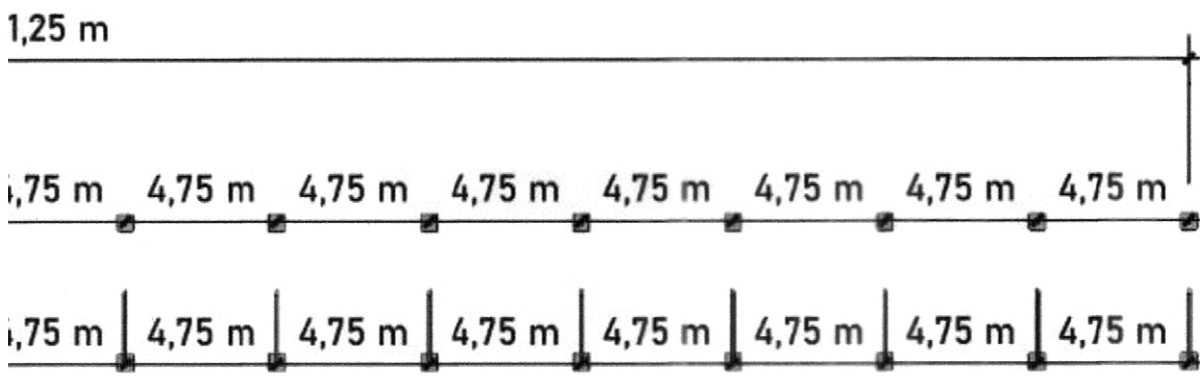
VISTA SUPERIOR - FILEIRA DE PLACAS 1 (168 módulos)

MÓDU
ESPAÇ



OTOVOLTÁICO

INC.: 12%

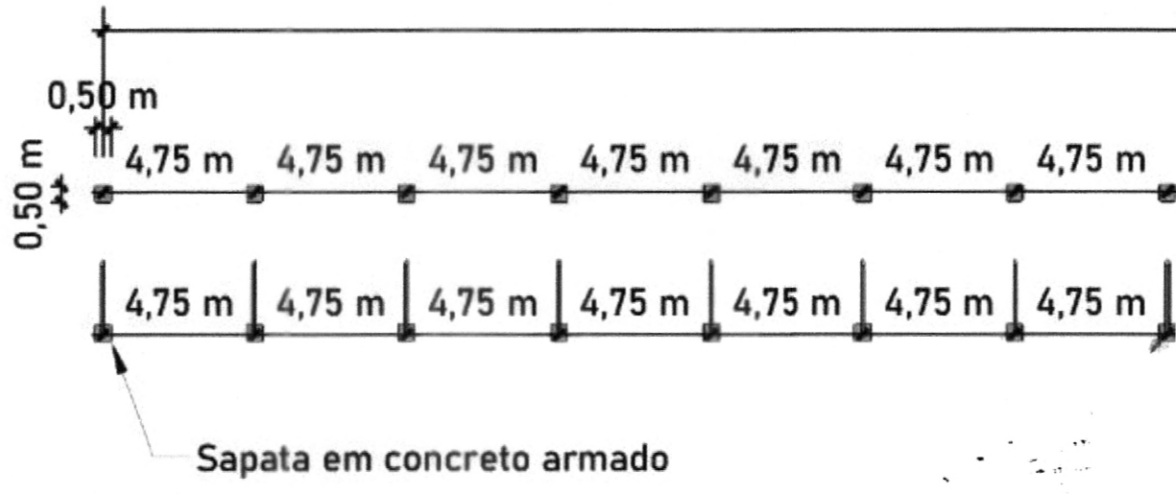


módulos)

DK
Daniel Kenji de Alencar OHI
RNP:061043786-0
Eng. Eletricista

PROJETO DE ESTRUTURA PARA SUPORTE DE SISTEMA F

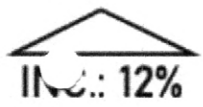
MUNICÍPIO DE IRAUÇUBA, CEARÁ



PLANTA DE PILARES - FILEIRA DE PLACAS 2 (18

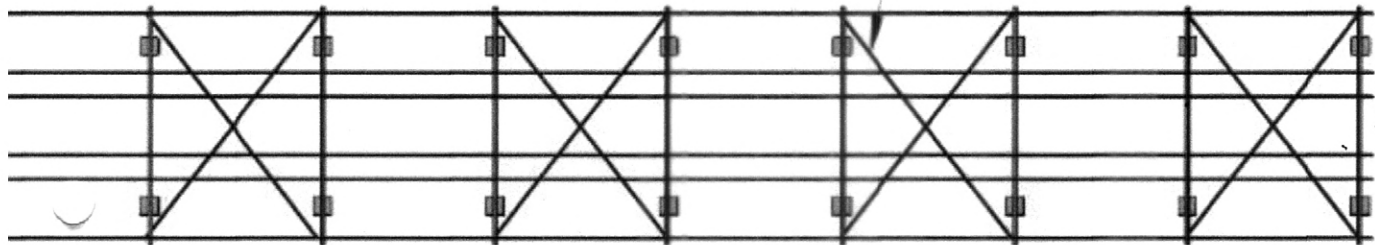


OTOVOLTÁICO



Viga inclinada
em aço galvanizado

Contraventamento

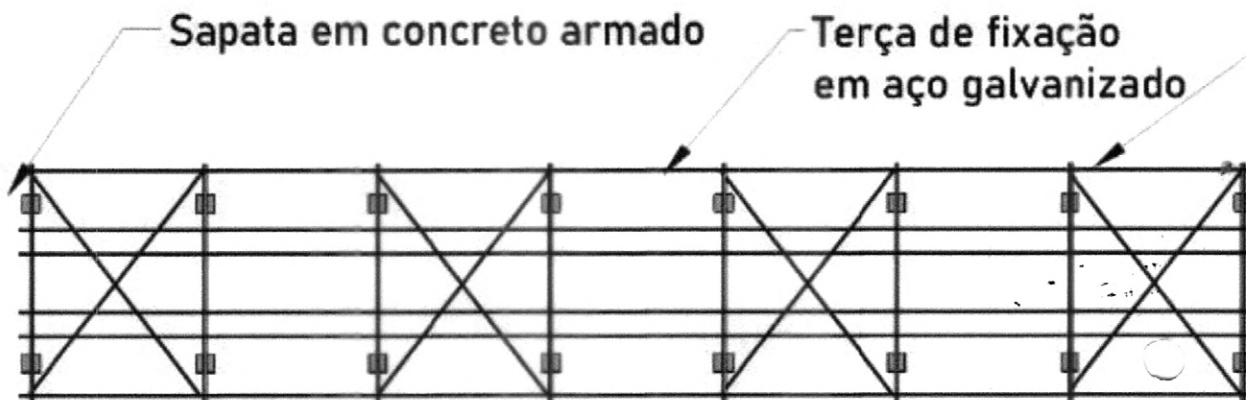


b)

Daniel Kenji de Alencar OHI
RNP:061043786-0
Eng. Eletricista

PROJETO DE ESTRUTURA PARA SUPORTE DE SISTEMA F

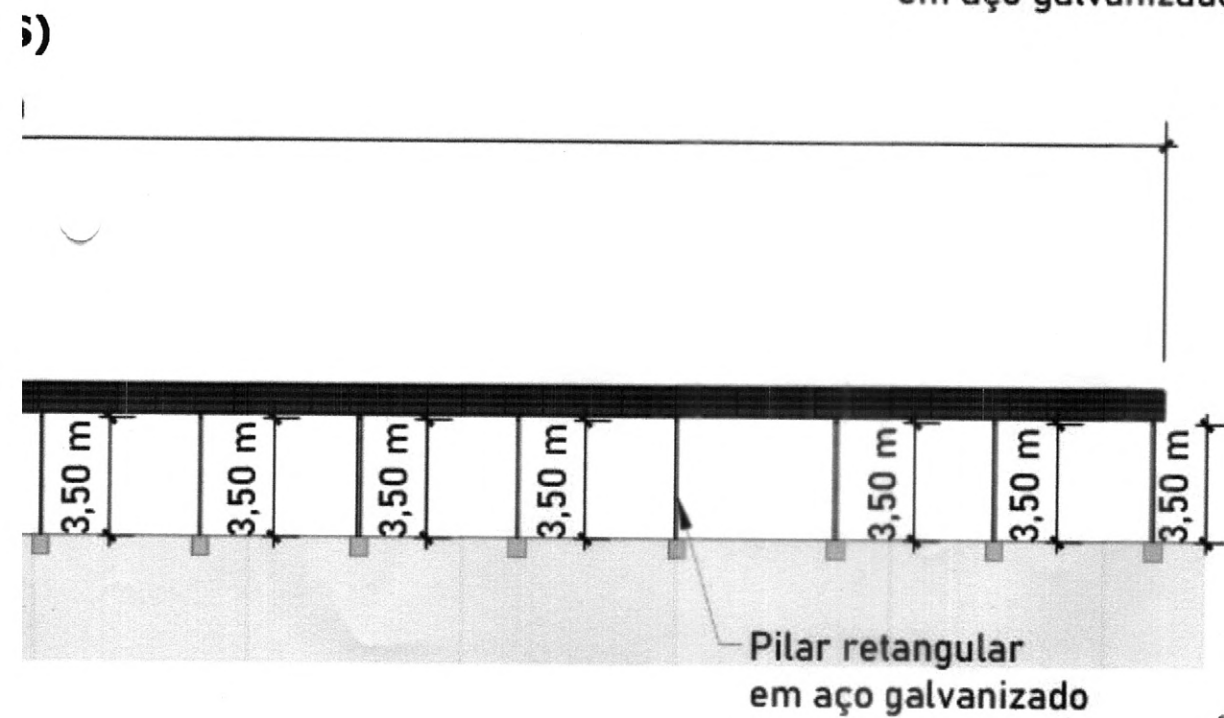
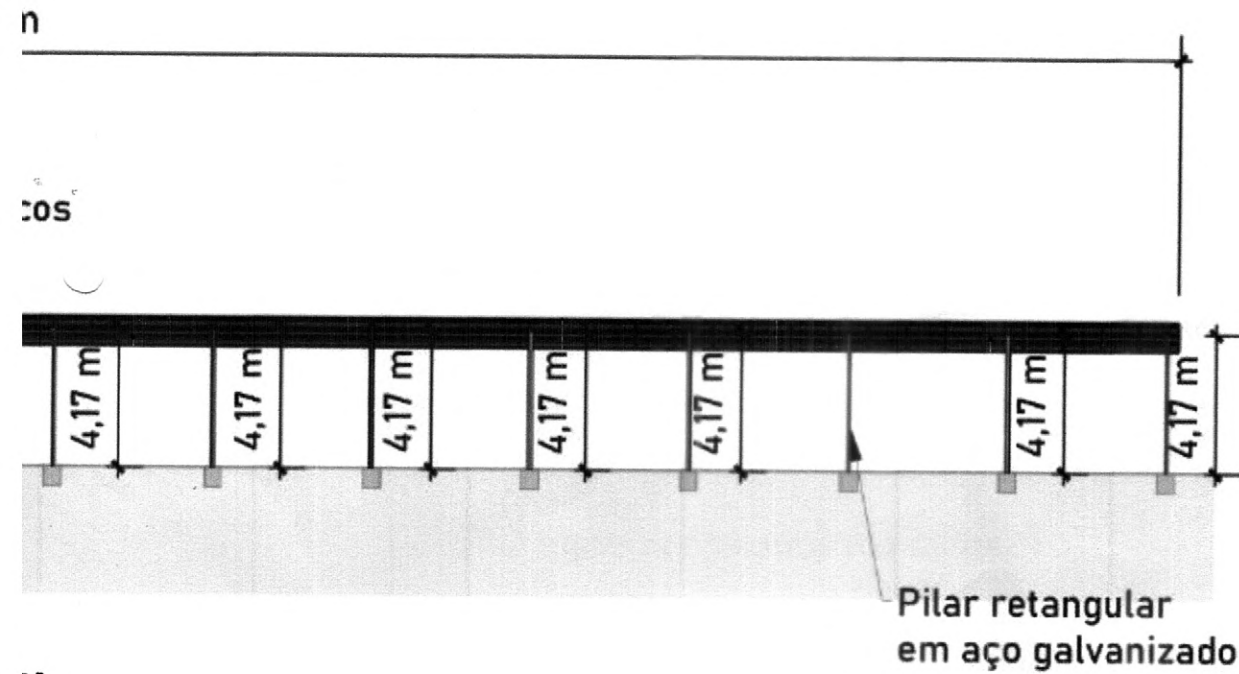
MUNICÍPIO DE IRAUÇUBA, CEARÁ



VISTA SUPERIOR - FILEIRA DE PLACAS 02 (186 MÓDULO)



OTOVOLTÁICO

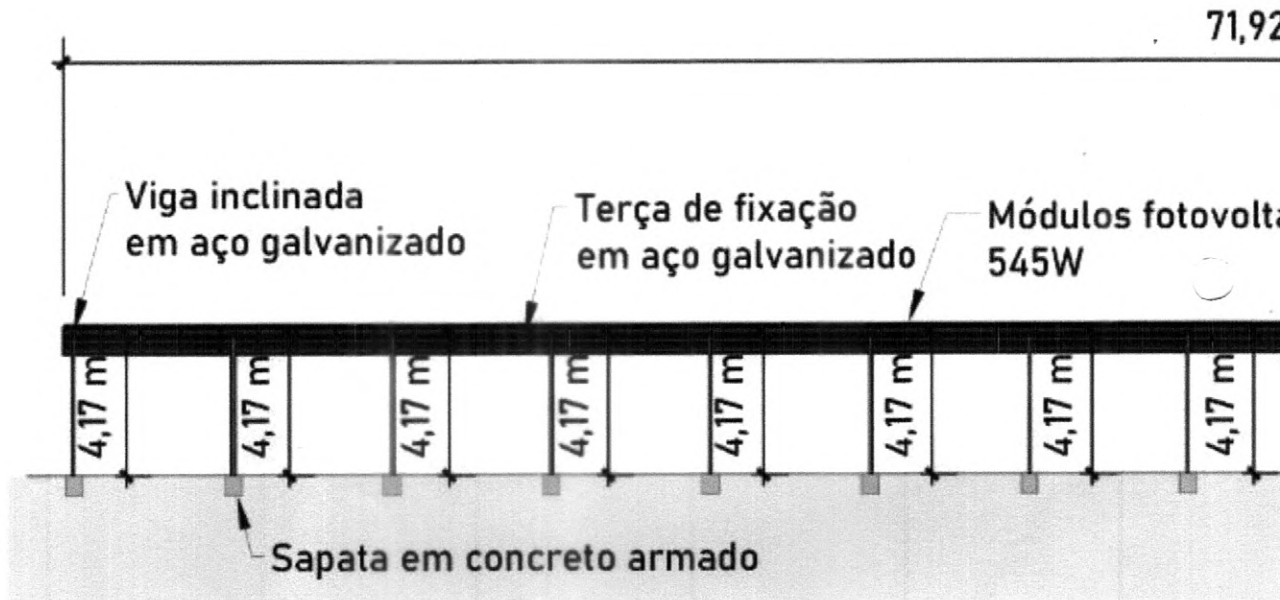


Daniel Kenji de Alencar OHI
RNP: 061043786-0
Eng. Eletricista

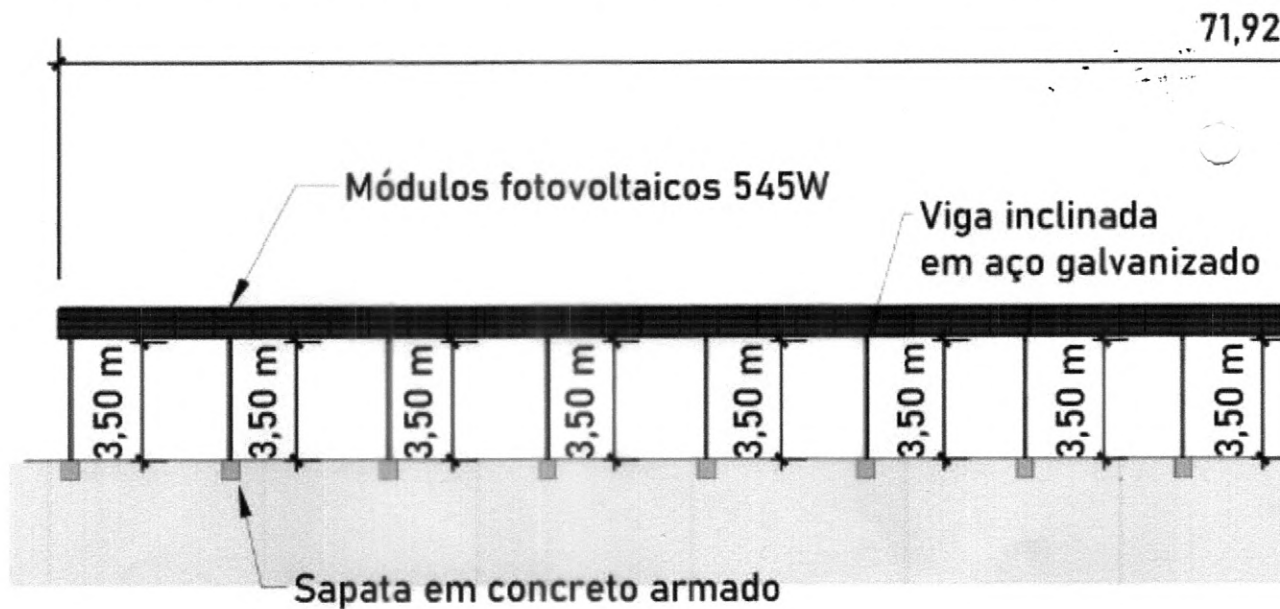


PROJETO DE ESTRUTURA PARA SUPORTE DE SISTEMA F

MUNICÍPIO DE IRAUÇUBA, CEARÁ



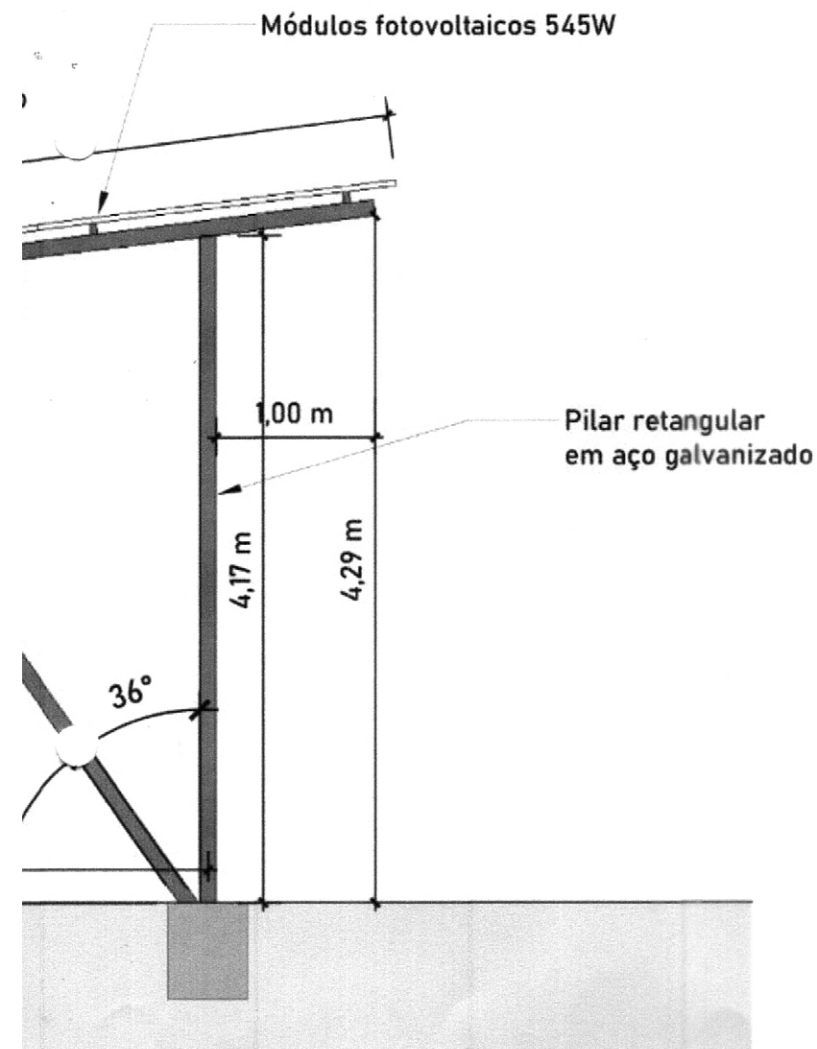
VISTA DE FUNDOS - FILEIRA DE PLACAS 02 (186 MÓDULOS)



VISTA FRONTAL - FILEIRA DE PLACAS 02 (186 MÓDULOS)



OTOVOLTÁICO

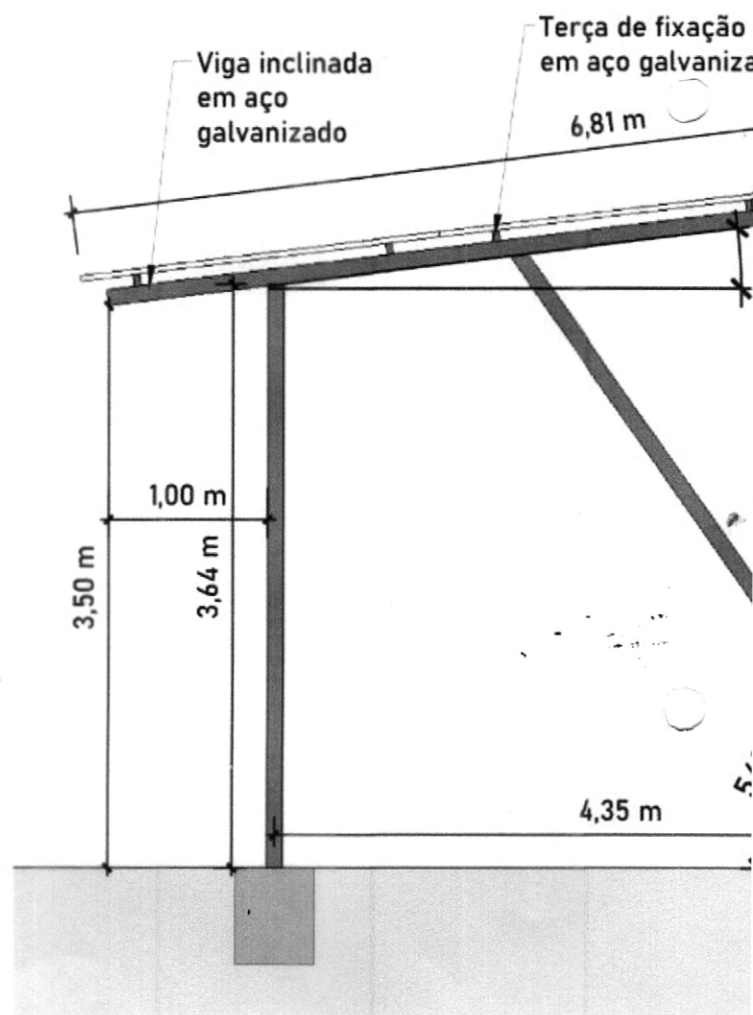


s)

Daniel Kenji de Alencar OHI
RNP: 061043786-0
Eng. Eletricista

PROJETO DE ESTRUTURA PARA SUPORTE DE SISTEMA F

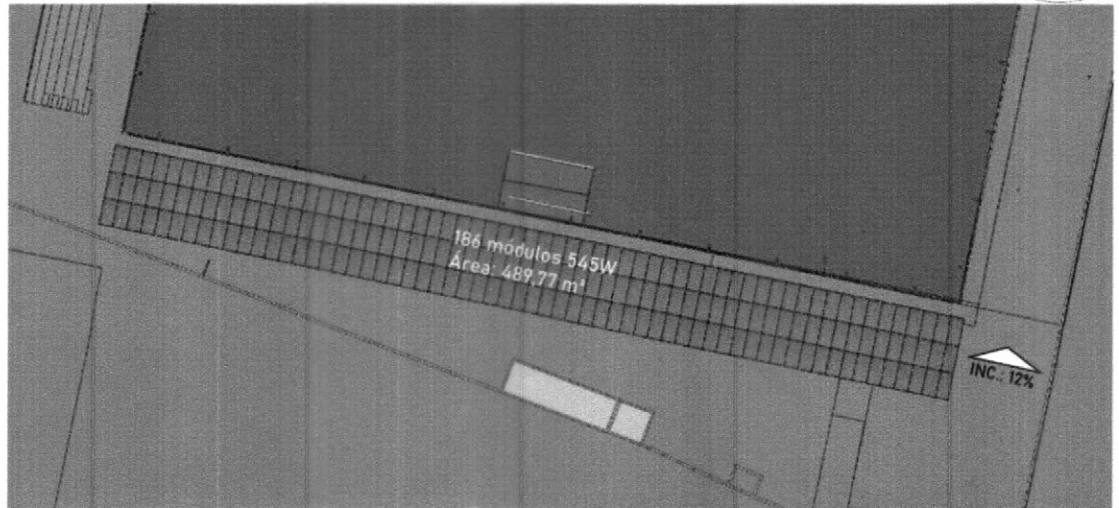
MUNICÍPIO DE IRAUÇUBA, CEARÁ



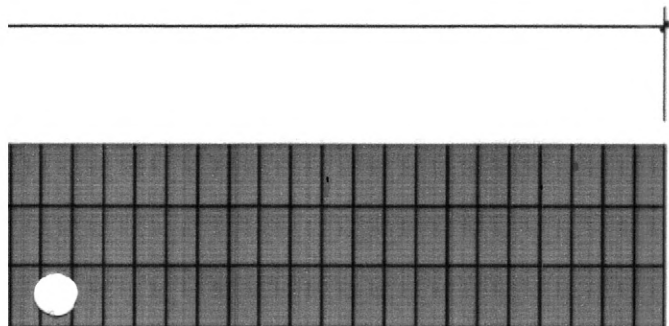
VISTA LATERAL - FILEIRA DE PLACAS 2 (186 módulos)



OTOVOLTÁICO



VISTA SUPERIOR - FILEIRA DE PLACAS 2 (186 módulos)

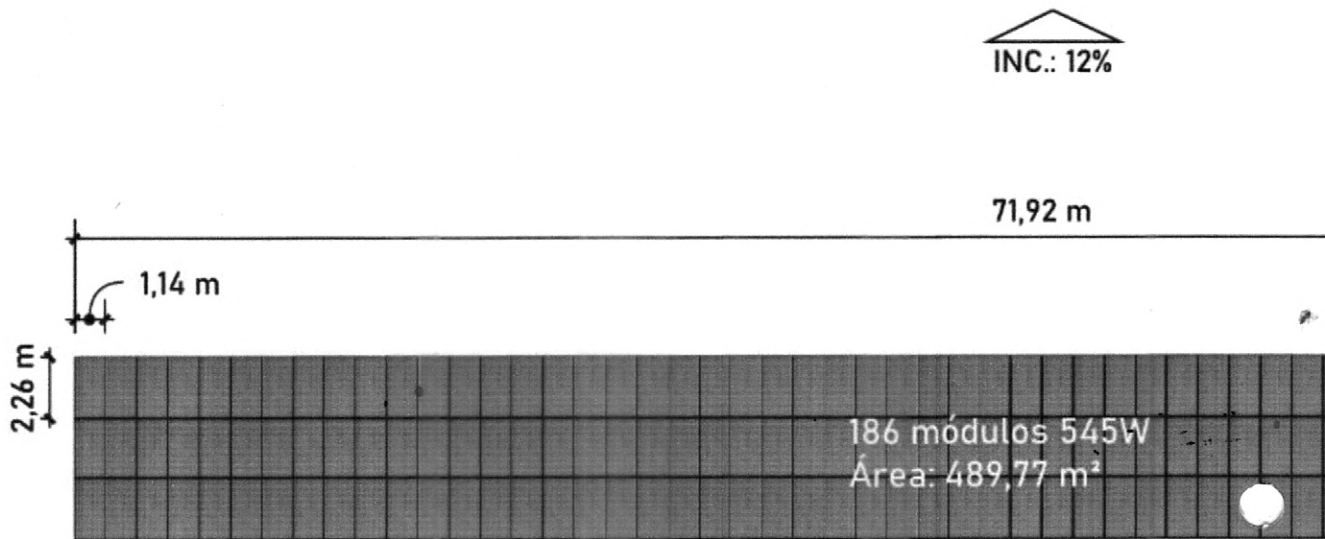


OSOLAR 545W
AMENTO ENTRE MÓDULOS: 2,5 cm

cl
Daniel Kenji de Alencar OHI
RNP:061043786-0
Eng. Eletricista

PROJETO DE ESTRUTURA PARA SUPORTE DE SISTEMA F

MUNICÍPIO DE IRAUÇUBA, CEARÁ



MÓDU
ESPAÇ

VISTA SUPERIOR - FILEIRA DE PLACAS 2 (186 módulos)



**PROJETO DE ESTRUTURA PARA SU
MUNICÍPIO DE IRAUÇUBA, CEARÁ
LOCAL: ESTACIONAMENTO DA PRA**



PORTO DE SISTEMA FOTOVOLTÁICO

CA DA PREFEITURA



FOTOVOLTAÍCO



IMAGEM 3D



LOCALIZAÇÃO NO MAPA

PRINCIPAIS VANTAGENS:

- IDEAL PARA ESTRUTURAS DE SOMBRA OU GARAGEM;
- FÁCIL E RÁPIDA EXECUÇÃO E MONTAGEM;
- LONGA DURABILIDADE;
- DESIGN SIMPLES E ARROJADO;

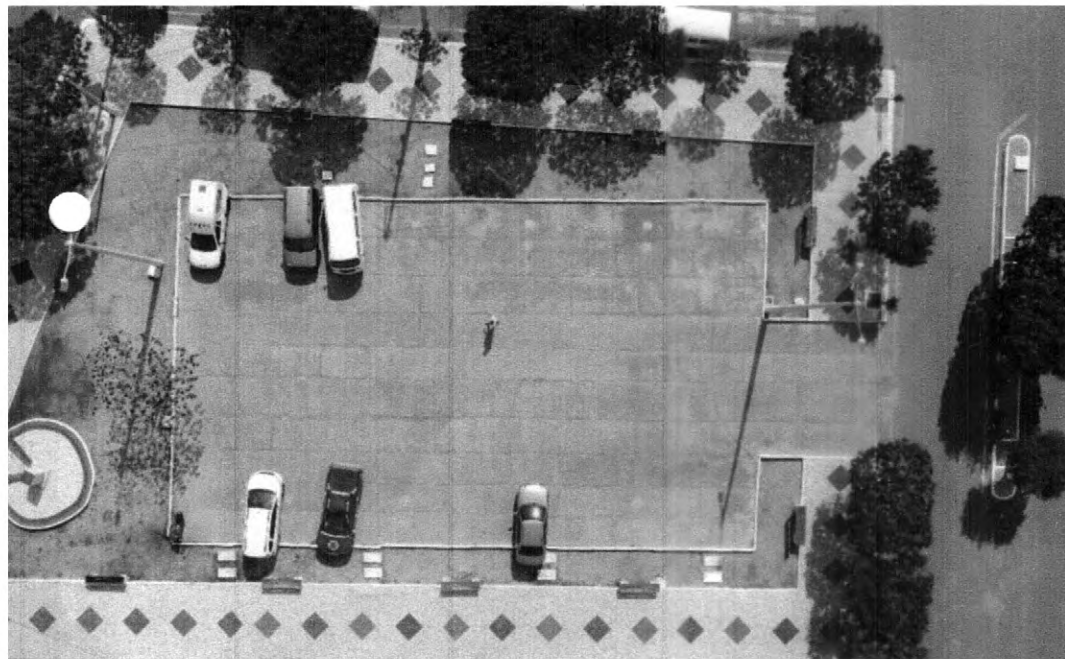
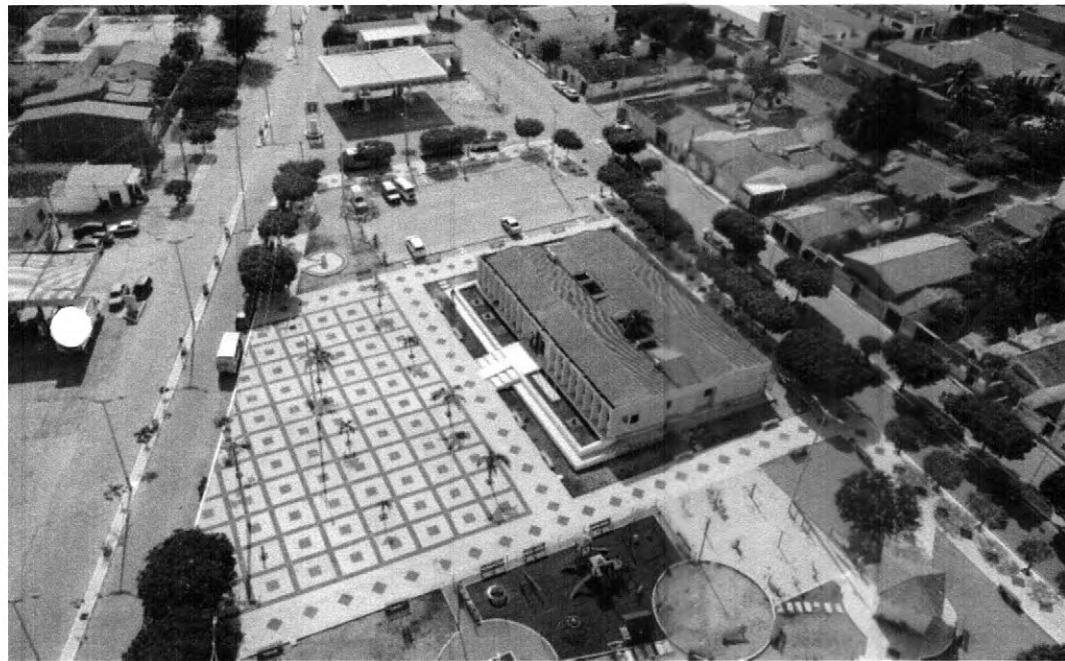
01/08



PROJETO DE ESTRUTURA PARA SUPORTE DE SISTEMA
MUNICÍPIO DE IRAUÇUBA, CEARÁ
ESTACIONAMENTO DA PRAÇA DA PREFEITURA



FOTOVOLTAICO



cl
02/08